

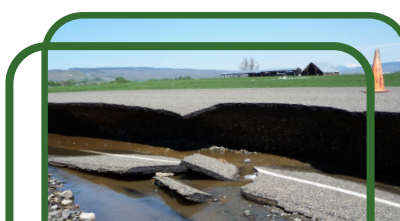
KITTITAS  
COUNTY

# HAZARD MITIGATION PLAN

City of Roslyn  
Annex



Kittitas County  
Public Works Department





## TABLE OF CONTENTS

<b>1. Introduction.....</b>	<b>1</b>
<b>2. Local Planning Team.....</b>	<b>1</b>
<b>3. Jurisdiction Profile .....</b>	<b>1</b>
3.1. Population .....	1
3.1.1. Underserved Population .....	2
3.2. Brief History.....	3
3.3. Governing Body Format .....	3
<b>4. Development Trends .....</b>	<b>4</b>
4.1. Changes in Priority .....	5
<b>5. Capability Assessment.....</b>	<b>5</b>
5.1. Planning and Regulatory Capabilities .....	5
5.2. Administrative and Technical Capabilities.....	7
5.3. Financial Resources .....	8
5.4. Education and Outreach Capabilities.....	8
5.5. Needs to Expand/Improve Capabilities .....	9
<b>6. Hazard Mitigation Plan Integration .....</b>	<b>9</b>
6.1. Existing Plan Integration .....	9
6.2. Potential Future Integration .....	10
<b>7. Significant Hazard Past Events .....</b>	<b>10</b>
<b>8. National Flood Insurance Program.....</b>	<b>11</b>
8.1. Floodplain Manager.....	11
8.2. Participation Activities.....	12
8.2.1. Substantial Damage .....	12
8.2.2. Substantial Improvement .....	12
8.3. Repetitive Loss and Severe Repetitive Loss Property .....	12
<b>9. Hazard Vulnerability and Impact Assessment.....</b>	<b>13</b>
<b>10. Hazard Risk Ranking.....</b>	<b>17</b>
<b>11. Mitigation Actions .....</b>	<b>19</b>
<b>Appendix A. Hazard Maps.....</b>	<b>54</b>
<b>Appendix B. Plan Adoption .....</b>	<b>61</b>



## 1. INTRODUCTION

This Annex details the hazard mitigation elements specific to the City of Roslyn, a participating jurisdiction to the 2024 Kittitas County Hazard Mitigation Plan update. This Annex is not intended to be a standalone document but supplements the information contained in **Volume 1 (Countywide Planning Elements)**. Therefore, all sections of **Volume 1** including the planning process, hazard identification and risk assessment, mitigation strategy (includes mitigation goals and objectives), and plan maintenance apply to and were met by the City of Roslyn. This Annex provides additional information specific to the City, with a focus on providing additional details on the hazard risk assessment and mitigation strategy (i.e., mitigation actions) for this community.

## 2. LOCAL PLANNING TEAM

The City of Roslyn Local Planning Team was comprised of the members listed on **Table 1**.

**Table 1. City of Roslyn Local Planning Team Members**

Name	Title	Department
Michelle Geiger	Planning and Building Official	City of Roslyn Planning and Building Department

## 3. JURISDICTION PROFILE

The City of Roslyn is nestled in the foothills of the east central Cascade Mountain Range within a predominantly Ponderosa pine and Douglas fir forest. The City is a gateway to the Alpine Lakes Wilderness Area and Lake Roslyn. To the north, there is an urban forest of over 300 acres that is bounded by 20-acre parcels and Plum Creek Timber holdings to the top of the Roslyn Ridge. The township of Ronald is located to the west and the Master Planned Resort of Suncadia is located to the east and south. State Route 903 runs through Roslyn from the southeast to the northwest. Exit 80, just east of Snoqualmie Pass, is the turn for Roslyn from Interstate 90, which runs from Seattle to Spokane.

### 3.1. Population

The City of Roslyn had a population of 827 as of July 1, 2022.<sup>1</sup> Between 2010 and 2020, the population increased by approximately 6.4%; however, a population decrease of 12.9% occurred between 2020 and 2022.<sup>2,3</sup> **Table 2** shows the City of Roslyn's population distribution between 2010 and 2022.

**Table 2. Population Estimates**

Jurisdiction	2010	2020	2022	Population Change (2010 – 2022)
City of Roslyn	893	950	827	-7.4%

<sup>1</sup> United States Census Bureau. (2022). City of Roslyn (DP05: ACS Demographics and Housing Estimates, 2022: ACS 5-Year Estimates Data Profiles). Retrieved from <https://data.census.gov/table/ACSDP5Y2020.DP05?q=160XX00US5360055&tid>.

<sup>2</sup> United States Census Bureau. (2020). City of Roslyn (P1: Total Population, 2020: DEC Demographic and Housing Characteristics). Retrieved from <https://data.census.gov/table/DECENNIALDHC2020.P1?q=160XX00US5360055&tid=DECENNIALPL2020.P1>.

<sup>3</sup> Washington State Office of Financial Management. (2010). 2010 Census 2-Page Demographic Profiles: City of Roslyn. Retrieved from <https://ofm.wa.gov/washington-data-research/population-demographics/decennial-census/census-2010/2010-census-2-page-demographic-profiles>.



### 3.1.1. Underserved Population

FEMA defines underserved populations as groups that have limited or no access to resources or that are otherwise disenfranchised. These groups may include, but are not limited to, people who are socioeconomically disadvantaged, people with limited English proficiency, geographically isolated or educationally disenfranchised people, people of color as well as those of ethnic and national origin minorities, women and children, individuals with disabilities and others with access and functional needs, and seniors.<sup>4</sup>

The CDC's SVI is considered an appropriate and authoritative dataset to identify areas where efforts can be prioritized to ensure equitable outcomes from mitigation planning and actions. Social vulnerability refers to a community's capacity to prepare for and respond to the stress of natural, human-caused, and technological disasters. CDC's SVI combines 16 census-derived social factors, within four (4) themes (i.e., socioeconomic status, household characteristics, racial and ethnic minority status, and housing type and transportation) that summarizes the extent to which an area is socially vulnerable to disasters. The overall SVI combines all variables to provide a comprehensive assessment, and the possible scores range from zero (0) (lowest vulnerability) to one (1) (highest vulnerability).<sup>5</sup>

The overall SVI score for Kittitas County is 0.3366 which indicates a low to medium level vulnerability. **Table 3** outlines the SVI information for each social factor for the City of Roslyn.<sup>6</sup>

**Note:** ArcGIS mapping analysis was performed utilizing Census Tract data by overlaying Census Tracts with the City of Roslyn planning area boundary. The information outlined in this section includes the best available data from the entire Census Tracts that intersect the jurisdiction.

**Table 3. Social Vulnerability Index (2022)**

Theme	Social Factors	Percent
Socioeconomic Status	People below 150% poverty estimate	20.9%
	Unemployed (Civilian 16 years old and older)	1.9%
	Housing Cost Burden	13.2%
	No High School Diploma	7.1%
	No Health Insurance	6.8%
Household Characteristics	65 years old and older	18.7%
	17 years and younger	17.4%
	Civilian with a Disability	11.5%
	Single-Parent Household	2.8%
	English Language Proficiency	0.9%

<sup>4</sup> Federal Emergency Management Agency. (n.d.). Glossary: Underserved Population/Communities. Retrieved from <https://www.fema.gov/about/glossary>.

<sup>5</sup> Centers for Disease Control and Prevention. (2024). CDC/ATSDR SVI 2022 Documentation. Retrieved from <https://www.atsdr.cdc.gov/placeandhealth/svi/documentation/pdf/SVI-2022-Documentation-H.pdf>.

<sup>6</sup> Centers for Disease Control and Prevention. (2022). CDC/ATSDR Social Vulnerability Index (SVI). Retrieved from [https://www.atsdr.cdc.gov/placeandhealth/svi/interactive\\_map.html](https://www.atsdr.cdc.gov/placeandhealth/svi/interactive_map.html).





Theme	Social Factors	Percent
Racial and Ethnic Minority Status	<ul style="list-style-type: none"> <li>Hispanic or Latino (of any race)</li> <li>Black or African American</li> <li>Asian</li> <li>American Indian or Alaska Native</li> <li>Native Hawaiian or Pacific Islander</li> <li>Two or More Races</li> <li>Other Races</li> </ul>	21.6%
Housing Type and Transportation	Multi-Unit Structures	3.7%
	Mobile Homes	0.2%
	Crowding	0.4%
	No Vehicle	0.7%
	Group Quarters	0.0%

### 3.2. Brief History

Incorporated in 1886, the coalmining town of Roslyn played a significant role in Washington State history. Extensive coal fields in the area fueled the Northern Pacific Railroad's trains during construction and early operation of a direct rail line through the Cascade Mountains.

Workers from coal mining regions in the United States, Europe and elsewhere came to work in the mines. English, Italian, and Slavic immigrants were among the early settlers and a significant portion of the town's early residents were foreign born. In 1888, responding to a strike, the Northern Pacific Coal Company recruited more than 300 African American miners from Virginia, North Carolina, and Kentucky and brought them, with their families, to work in the mines. At one time, 24 ethnic groups and nationalities were living in Roslyn. Today, many of the original families continue to make the City of Roslyn their home.

### 3.3. Governing Body Format

The City of Roslyn has a City Mayor/City Council form of government with seven (7) City Council seats. The City runs through the Administrative Office. Current departments include Administrative/Finance, Planning, Public Works, and Volunteer Fire Department. The City of Cle Elum Police Department has the unique responsibility of providing police services to the City of Roslyn.

The City operates a water system managed by the Public Works Department and provides water to the City of Roslyn, Kittitas Water District #2 (Ronald), the Cle Elum/Roslyn School District, and other homes and businesses south of the City. The water source is Domerie Creek, located approximately 5.5 miles from Roslyn on the east side of the Cle Elum River. Water is gravity fed from the source to a slow sand filtration treatment plant located outside of Ronald, where it continues to a one (1) million gallon reservoir above the Roslyn Historical Cemeteries.

Sanitary services are provided by the City of Roslyn in its transmission facilities and a Regional Wastewater Treatment plant located in and owned by the City of Roslyn. The Kittitas Water District #2 (Ronald) is connected to the transmission system at Runje Field. Sewage flows via gravity toward Roslyn's old sewage lagoons where flow data is captured as it continues towards the City of Roslyn. A five (5) acre lagoon is maintained as a stormwater attenuation facility during times of heavy rain and flood events.



Fire service is provided by the City of Roslyn Fire Department, which has a 100% volunteer staff and one (1) fire station.

#### 4. DEVELOPMENT TRENDS

The City's Comprehensive Plan serves as a guide to address future growth and development projects in the City within the Urban Growth Area (UGA), and it embodies the community's goals and policies, and aims to guide the City's development over the next 20 years. Under the State of Washington's Growth Management Act (GMA) and RCW.36.70A, cities must update their Comprehensive Plan every eight (8) years. The City of Roslyn Comprehensive Plan was last adopted in June 2019. The City's Comprehensive Plan has the following elements – Historic Preservation, Land Use, Housing, Economic Development, Transportation, Utilities, and Capital Facilities. The most recent City of Roslyn Comprehensive Plan can be accessed via the following link

[cityofroslyn.sharepoint.com/:f/g/EI\\_Gs9YHjNtDn75bwQ6v4REBQFkice2Y67AhvVhR0TfamQ?e=eGLIkE](https://cityofroslyn.sharepoint.com/:f/g/EI_Gs9YHjNtDn75bwQ6v4REBQFkice2Y67AhvVhR0TfamQ?e=eGLIkE).

Kittitas County population projections, developed in conjunction with its cities, show a need for an additional 216 homes in Roslyn by 2037. The City of Roslyn and its UGA have land capacity for an additional 216 units to meet the residential needs through 2037 while preserving critical areas, providing parks and right-of-way, and keeping market values affordable. Additionally, the City has a relatively high proportion of vacation homes, which are not occupied on a year-round basis.

**Table 4** summarizes development trends in the performance period since development of the previous hazard mitigation plan and expected future development trends.

**Table 4. Recent and Expected Development Trends**

Criteria	Response
Has your jurisdiction annexed any land since the development of the previous Hazard Mitigation Plan?	No
<i>If yes, give the estimated area annexed and estimated number of parcels or structures.</i>	N/A
Is your jurisdiction expected to annex any areas during the performance period of this Plan?	No
Has your jurisdiction had any major changes in development over the <u>past</u> five (5) years that have occurred in hazard prone areas?	No
<i>If yes, please briefly describe.</i>	N/A
Are any areas targeted for development or major redevelopment in the <u>next</u> five (5) years that will occur in hazard prone areas?	No
<i>If yes, please briefly describe.</i>	N/A
Provide a qualitative description of where development has occurred in hazard areas.	There have been no changes in development within the City in the last five (5) years. Existing land use patterns and structures have remained unchanged, with no new developments introduced in hazard areas.



## 4.1. Changes in Priority

In the last five (5) years, the City of Roslyn has increased the City's wildfire resiliency. Upper Kittitas County (UKC) Fuels is an interagency fuels program supported by the Cle Elum Fire Department, Kittitas County Fire District #6 (Ronald/Lake Cle Elum), Kittitas County Fire District #7, the Roslyn Fire Department, and the Washington Department of Natural Resources. Through this initiative, founded in 2020, the crew has worked to mitigate the threat wildfire poses to the City of Roslyn and its surrounding communities by reducing fuels and conducting prescribed burn operations. UKC Fuels also offers a residential chipping program every Spring and Fall season. Additionally, mitigation actions from the previous Plan were updated, and a more concerted effort on achieving equitable outcomes for all communities, including underserved communities and socially vulnerable populations, has been implemented through the creation of a community website [roslynfire.org/wildfire](https://roslynfire.org/wildfire).

## 5. CAPABILITY ASSESSMENT

Federal regulations require hazard mitigation plans to identify goals for reducing long-term vulnerabilities to the identified hazards in the planning area (Section 201.6(c)(3)(i)). A critical step in the development of specific hazard mitigation actions and projects is assessing existing authorities, policies, programs, and resources and capabilities to use or modify local tools to reduce losses and vulnerability from profiled hazards.

A capability assessment was conducted for the City of Roslyn and participating jurisdictions' authorities, policies, programs, and resources. Goals and mitigation actions were developed using input from this assessment. Information regarding the City's jurisdictions' implementation of and continued participation in the National Flood Insurance Program (NFIP) can be found in Section 8 of this Annex.

The Local Planning Team assessed the City's capabilities that can contribute to the reduction of long-term vulnerabilities to hazards. The capabilities include the following categories:

- Planning and Regulatory Capabilities
- Administrative and Technical Capabilities
- Financial Capabilities
- Education and Outreach Capabilities

Additionally, ways to expand on and improve these existing policies and programs to integrate hazard mitigation into the day-to-day activities and programs of the City were considered.

### 5.1. Planning and Regulatory Capabilities

These include local ordinances, policies, and laws to manage growth and development (e.g., land use plans, capital improvement plans, transportation plans, emergency preparedness and response plans, building codes, and zoning ordinances). The City of Roslyn will adopt the approved 2024 Kittitas County Hazard Mitigation Plan by reference into the City's Comprehensive Plan. **Table 5** contains a list of legal and regulatory capabilities.



**Table 5. Planning and Regulatory Capabilities**

Capability Category	Local Authority	Other Jurisdictional Authority	State Mandated	Comments
<b>Codes, Ordinances, and Requirements</b>				
Building Code	Yes	No	Yes	Title 15, Chapter 15.05 of the Roslyn Municipal Code (RMC) Title 14.04 of the Kittitas County Code (KCC) Chapter 19.27 of the Revised Code of Washington (RCW)
Zoning Code	Yes	No	Yes	Title 18 of the RMC Title 17 of the KCC
Subdivisions Code	Yes	No	Yes	Title 18 of the RMC Title 16 of the KCC
Post Disaster Recovery	No	No	No	
Real Estate Disclosure	No	No	Yes	Chapter 64.06 RCW
Growth Management	Yes	No	Yes	The Washington State Growth Management Act (RCW Chapter 36.70A) directs growth management and comprehensive planning for cities and counties. City of Roslyn Comprehensive Plan was adopted in 2019.
Site Plan Review	Yes	No	No	Title 18 of the RCC Site plans are reviewed for compliance with codes and development regulations.
Special Purpose (flood management, critical areas)	Yes	No	Yes	Title 18 of the RMC (Critical Areas) Title 15 of the RMC (Floodplain Regulations)
Capability Category	Local Authority	Other Jurisdictional Authority	State Mandated	Comments
<b>Planning Documents</b>				
Comprehensive Plan	Yes	No	Yes	Cities in Washington State must update their Comprehensive Plan every eight (8) years, per the Washington Growth Management Act (GMA) and RCW.36.70A. Last adopted in 2019.
Comprehensive Emergency Management Plan	Yes	No	Yes	Chapter 38.52 RCW The County Comprehensive Emergency Plan (CEMP) was last updated in 2016, and an update is in progress.
Floodplain or Basin Plan	Yes	No	No	Kittitas County Comprehensive Floodplain Management Plan (1996)





Capability Category	Local Authority	Other Jurisdictional Authority	State Mandated	Comments
Stormwater Plan	No	No	No	Stormwater Management Manual for Eastern Washington (2019)
Capital Improvement Plan	Yes	No	Yes	City of Roslyn 2016-2021 Capital Facilities Plan  The Capital Facilities Plan, a required element of the Growth Management Act and it is incorporated into the City's Comprehensive Plan in Chapter 8.
Transportation Plan	Yes	No	Yes	The Transportation Element, a requirement of the Growth Management Act, is part of the City's Comprehensive Plan in Chapter 6.
Habitat Conservation Plan	Yes	No	Yes	The GMA requires cities and counties to adopt regulations for the protection of environmental areas, which include habitat conservation areas. It is incorporated in the Land Use Element chapter of the City's Comprehensive Plan.  Roslyn Urban Forest Land Stewardship Plan (2008)
Economic Development Plan	Yes	No	No	Economic Development is outlined in Chapter 5 of the City's Comprehensive Plan (2019).
Emergency Response Plan	No	No	No	Upper Kittitas County Emergency Response Plan which is under development.
Shoreline Management Plan	No	No	Yes	The goals and policies of the Shoreline Management Act (RCW 90.58.020) are adopted by reference as a goal of the GMA.
Post Disaster Recovery Plan	No	No	No	

## 5.2. Administrative and Technical Capabilities

The administrative and technical capabilities include community (i.e., public and private) staff and their skills and tools, which can be used for mitigation planning and implementation. This capability includes engineers, planners, emergency managers, GIS analysts, building inspectors, grant writers, and floodplain managers. Small communities may rely on other government entities, such as counties or special districts, for resources. These capabilities may be used to support mitigation activities. **Table 6** lists administrative and technical capabilities.

**Table 6. Administrative and Technical Capabilities**

Staff/Personnel Resources	Available	Department/Agency/Position
Planners or engineers with knowledge of land development and land management practices	Yes	City Planner, City of Roslyn Planning and Building Department Engineer, Gray & Osborne
Engineers or professionals trained in building or infrastructure construction practices	Yes	Engineer, Gray & Osborne
Planners or engineers with an understanding of natural hazards	Yes	Engineer, Gray & Osborne



Staff/Personnel Resources	Available	Department/Agency/Position
Staff with training in benefit/cost analysis	Yes	Engineer, Gray & Osborne
Floodplain manager	Yes	Engineer, Gray & Osborne
Surveyors	Yes	Engineer, Gray & Osborne
Personnel skilled or trained in GIS applications	Yes	Engineer, Gray & Osborne
Scientist familiar with natural hazards in local area	Yes	Engineer, Gray & Osborne
Emergency manager	No	N/A
Grant writers	Yes	Engineer, Gray & Osborne

### 5.3. Financial Resources

**Table 7** contains a list of financial capabilities available to the City. These financial resources may be used to support mitigation activities based on procedures for each resource.

**Table 7. Financial Resources**

Financial Resources	Accessible or Eligible to Use
Community Development Block Grants	Yes
Capital Improvements Project Funding	Yes
Authority to Levy Taxes for Specific Purposes	Yes
User Fees for Water, Sewer, Gas or Electric Service	Yes
Incur Debt through General Obligation Bonds	Yes
Incur Debt through Special Tax Bonds	Yes
Incur Debt through Private Activity Bonds	No
Withhold Public Expenditures in Hazard-Prone Areas	Can, but do not
State Sponsored Grant Programs	Yes
Development Impact Fees for Homebuyers or Developers	Yes

### 5.4. Education and Outreach Capabilities

**Table 8** lists the City's financial and public outreach capabilities. These capabilities include fire safety programs, hazard awareness campaigns, public information, and communications offices. Education and outreach capabilities can be used to inform the public about current and potential mitigation activities.

**Table 8. Education and Outreach Resources**

Resource	Available	Department/Agency/Position/Description
Public Information Officer	Yes	Clerk, City of Roslyn Finance and Utilities Department
Personnel skilled or trained in website development	No	N/A
Hazard mitigation information available on your website	No	N/A



Resource	Available	Department/Agency/Position/Description
Utilize social media for hazard mitigation education and outreach	Yes	Clerk, City of Roslyn Finance and Utilities Department <b>Facebook:</b> <a href="https://www.facebook.com/UKCRoslynWa/">facebook.com/UKCRoslynWa/</a>
Citizen boards or commissions that address issues related to hazard mitigation	No	N/A
Other programs already in place that could be used to communicate hazard-related information	Yes	Clerk, City of Roslyn Finance and Utilities Department (text notification system)
An established warning systems for hazard events	Yes	Kittitas County Sheriff's Office, Emergency Management Office

## 5.5. Needs to Expand/Improve Capabilities

The City of Roslyn identified existing authorities, policies, programs, funding, and/or resources that need to be expanded and/or improved in order to support the implementation of the hazard mitigation initiatives identified in this Plan (e.g., mitigation actions).

- Grant writing capabilities need to expand in order to improve the City's ability to apply for hazard mitigation grants.
- GIS capabilities should be expanded in order to improve planning capabilities.
- Building codes and ordinances should be reviewed based on developing trends in identified hazards and mitigation measures that can make them more effective at preventing losses. Furthermore, building codes should be updated to comply with the latest international and state building codes.
- Enhance the City's website to include educational material on hazard mitigation and to provide information on mitigation activities the City is doing (e.g., mitigation projects), and to educate residents about risk reduction.

## 6. HAZARD MITIGATION PLAN INTEGRATION

The information on hazards, risk, vulnerability, and mitigation contained in this Hazard Mitigation Plan is based on the best available data at the time of the Plan update. Plan integration consists of the incorporation of hazard mitigation into other relevant planning mechanisms (e.g., general planning and capital improvement planning). It includes the integration of natural hazard information and mitigation policies, principles, and actions into local planning mechanisms and vice versa. Additionally, plan integration is achieved through the involvement of key staff and community officials in collaborative hazard mitigation planning.

### 6.1. Existing Plan Integration

In the performance period since the adoption of the previous Hazard Mitigation Plan, City of Roslyn made progress on integrating components of the hazard mitigation strategy (e.g., goals, objectives, and actions) into the planning initiatives listed in **Table 9**.

**Table 9. Existing Plan Integration**

Planning Initiative	Description
City Comprehensive Plan	The Hazard Mitigation Plan is utilized to identify new information that was not available during the previous revision of the Comprehensive Plan, relating to hazards (i.e., flood and fire), and climate adaptation and resiliency strategies.



Planning Initiative	Description
Capital Facilities Plan	The Capital Facilities Plan (CFP) should continue to utilize flexibility in the CFP to incorporate mitigation measures in planned projects which include improvements to water supply and treatment, streets, sidewalks, sanitary and storm sewers and routine replacement of outdated City equipment.
Upper Kittitas County Emergency Preparedness Plan	The Upper Kittitas County Emergency Preparedness Plan (EEP) describes how communities in upper Kittitas County (i.e., City of Cle Elum, Town of South Cle Elum, City of Roslyn, and Suncadia Resort) will respond to save lives, protect property, and stabilize the incident. The hazard risk assessment outlined in this Hazard Mitigation Plan is implemented into the UKC EEP planning assumptions to ensure that the most likely hazards are addressed accordingly.

## 6.2. Potential Future Integration

As the Hazard Mitigation Plan is implemented, the City of Roslyn will use information from the Plan as the best available science and data on hazards. The capability assessment presented in Section 5 of this Annex identifies codes, plans, and programs that provide opportunities for integration. The Citywide and local action plans developed for this Hazard Mitigation Plan are related to plan integration. The capability assessment identified plans and programs, listed in **Table 10**, that do not currently integrate goals and recommendations of this Plan but provide opportunities to do so in the future.

**Table 10. Potential Future Integration**

Planning Initiative	Description
City Comprehensive Plan	The opportunity to incorporate additional hazard mitigation and abatement measures will be contemplated for inclusion in the next Comprehensive Plan update or amendments. The Comprehensive Plan must be updated every (8) years.
Capital Facilities Plan	The City will continue to ensure consistency between this Hazard Mitigation Plan and future updates of the Capital Facilities Plan. The Hazard Mitigation Plan may identify new possible funding sources for capital projects and may result in modifications to proposed projects based on results of the risk assessment.
Municipal Code	The hazards, goals, and actions of this Hazard Mitigation Plan will be considered in the next update of the City's land use, zoning, and subdivision codes, as applicable.

The City's Local Planning Team will identify all relevant planning initiatives that are scheduled to be updated in the next year and during the annual update process of the Hazard Mitigation Plan. Additionally, opportunities to integrate key elements of the Hazard Mitigation Plan, specifically any relevant strategies, into the planning initiatives will be identified by the Local Planning Team. Mitigation actions were identified to promote plan integration in future revisions of this Plan.

## 7. SIGNIFICANT HAZARD PAST EVENTS

A complete risk assessment, including past incidents, for each identified hazard of concern can be found in **Volume 1** of this Plan. **Table 11** provides information on significant hazard events that uniquely impacted the City of Roslyn.





**Table 11. Significant Past Events**

Date	Event Type	Description
December 2022	Winter Weather	It was an active month for winter weather in the region with frequent weather systems that brought a variety of hazardous conditions. Heavy snow, strong winds, significant freezing rain, dense fog, and very cold temperatures with low wind chills were all seen throughout the month. At the end of the month, a mix of heavy freezing rain and heavy snow resulted in numerous traffic accidents and highway closures across the planning area. <sup>7</sup>
August 11, 2017 – November 2, 2017	Wildfire	A lightning strike started the Jolly Mountain Fire on August 11, 2017. The fire burned in the Cle Elum Ranger District of the Okanogan-Wenatchee National Forest and on or near land managed by the Washington Department of National Resources and The Nature Conservancy. The fire lasted over three (3) months and burned over 92,000 acres. <sup>8</sup> Furthermore, wildfire smoke severely affected the air quality in Kittitas County. (FM-5200)

## 8. NATIONAL FLOOD INSURANCE PROGRAM

The City of Roslyn is a member of the National Flood Insurance Program (NFIP) but has chosen to not participate in the NFIP's Community Rating System (CRS). The City's NFIP participation information is listed in **Table 12**.

**Table 12. NFIP Participation Information**

CID	Community Name	NFIP Participation Date	Current Effective FIRM Date	CRS Entry Date	CRS Current Effective Date	CRS Class
530299	City of Roslyn	6/5/1985	9/24/2021	N/A	N/A	N/A

### 8.1. Floodplain Manager

As an NFIP participating jurisdiction, the City of Roslyn has a designated Floodplain Manager that is charged with enforcing floodplain regulations, routinely monitoring the floodplains, and providing community assistance such as encouraging owners to maintain flood insurance. The City's Floodplain Manager information is listed in **Table 13**.

**Table 13. Floodplain Manager**

Jurisdiction	Department	Name	Title	Phone Number
City of Roslyn	Planning/Building Department	Michelle Geiger	Planning and Building Official	(509) 649-3105

<sup>7</sup> National Weather Service Pendleton, Oregon Forecast Office. (2022). Month in Review – December 2022. Retrieved from <https://www.weather.gov/media/pdt/Month%20In%20Review%20-%20December%202022.pdf>.

<sup>8</sup> Bain, K. (2017). Jolly Mountain Fire Still Burning; 100 Percent Contained. Retrieved from [https://www.dailyrecordnews.com/news/jolly-mountain-fire-still-burning-percent-contained/article\\_ee41645b-95cd-53b3-bf30-b413be0670f1.html](https://www.dailyrecordnews.com/news/jolly-mountain-fire-still-burning-percent-contained/article_ee41645b-95cd-53b3-bf30-b413be0670f1.html).



## 8.2. Participation Activities

The City of Roslyn NFIP participation activities over the last five (5) years include the following:

- Provides the following services – permit review, GIS, inspections, and engineering capability.
- Floodplain Administrator is a Certified Floodplain Manager (CFM).
- Teaches property owners or other stakeholders about the importance of flood insurance through public outreach events, workshops, and/or seminars.
- Enforces local floodplain regulations and monitors compliance.
- Floodplain management regulations meet or exceed FEMA or State minimum requirements.

### 8.2.1. Substantial Damage

*Substantial damage* means damage of any origin sustained by a structure by which the cost of restoring the structure to its previous condition would equal or exceed 50% of the market value of the structure before the damage occurred. (*Municipal Code Title 15, Chapter 15.15*)

### 8.2.2. Substantial Improvement

*Substantial improvement* means any repair, reconstruction, rehabilitation, addition, or improvement of a structure, the cost of which equals or exceeds 50% of the market value of the structure before the start of construction of the improvement. This term includes structures which have incurred *substantial damage*, regardless of the actual repair work performed. The term does not, however, include either:

- Any project for improvement of a structure to correct previously identified existing violations of state or local health, sanitary, or safety code specifications that have been identified by the local code enforcement official and that are the minimum necessary to assure safe living conditions.
- Any alteration of a historic structure, provided, that the alteration will not preclude the structure's continued designation as a historic structure. (*Municipal Code Title 15, Chapter 15.15*)

## 8.3. Repetitive Loss and Severe Repetitive Loss Property

The Federal Emergency Management Agency (FEMA) defines a Repetitive Loss property as an NFIP insured structure with two (2) or more claims of more than \$1,000 each within any rolling 10-year period, since 1978.<sup>9</sup>

A Severe Repetitive Loss property is defined by FEMA as any NFIP insured structure for which either of the following is true when at least two (2) of the claims are within 10 years of each other (claims made within 10 days will be counted as one (1) claim):<sup>10</sup>

- That has incurred flood related damage for which four (4) or more separate claims payments have been made, with the amount of each claim (including buildings and contents payments) exceeding \$5,000, and with the cumulative amount of such claims exceeding \$20,000.
- For which at least two (2) separate claims payments (building payments only) have been made under such coverage, with the cumulative amount of such claims exceeding the market value of the building.

<sup>9</sup> Federal Emergency Management Agency. (2020). Repetitive Loss Structure. Retrieved from <https://www.fema.gov/node/405233>.

<sup>10</sup> Federal Emergency Management Agency, National Flood Insurance Program. (2022). Flood Insurance Manual: Risk Rating 2.0: Equity in Action Edition. Retrieved from [https://www.fema.gov/sites/default/files/documents/fema\\_nfip-flood-insurance-full-manual\\_102022.pdf](https://www.fema.gov/sites/default/files/documents/fema_nfip-flood-insurance-full-manual_102022.pdf).



Repetitive loss records from the City of Roslyn are listed in **Table 14**.

**Table 14. Repetitive Loss Properties**

Jurisdiction	Repetitive Loss Properties	Severe Repetitive Loss Properties
City of Roslyn	0	0

**Table 15** summarizes the NFIP active policies and coverage in force data for the City of Roslyn.

**Table 15. NFIP Policies**

Jurisdiction	NFIP Policies	Insurance in Force	Total Claims Paid	Sum of Claims Paid
City of Roslyn	3	\$1.153 Million	0	\$0

## 9. HAZARD VULNERABILITY AND IMPACT ASSESSMENT

Exposure and vulnerability to certain hazards affect the entire County and others are geographically defined. Although the entire County may be vulnerable to these hazards, their impacts may vary based on existing community conditions (e.g., underserved, or functional access needs populations may be more susceptible based on certain conditions, vulnerabilities, or needs).

A complete risk assessment for each identified hazard of concern is in **Volume 1** of this Plan. **Table 16** provides information on a several key vulnerabilities for the City of Roslyn. Hazard mapping can be found in **Appendix A** of this Annex.

**Table 16. Hazard Vulnerability and Impact Assessment**

Hazards	Vulnerabilities and Impacts
<b>Avalanche</b>	The Local Planning Team determined that the City does not have unique vulnerabilities and impacts to avalanches.
<b>Dam and Levee Failure</b>	The Local Planning Team determined that the City does not have unique vulnerabilities and impacts to dam and levee failure.
<b>Drought</b>	The Local Planning Team determined that the City does not have unique vulnerabilities and impacts to droughts.
<b>Earthquake</b>	The Local Planning Team determined that the City does not have unique vulnerabilities and impacts to earthquakes.
<b>Flood</b>	A small area within the City of Roslyn is located within the 100-Year Floodplain of Domerie and Crystal creeks. These waters have experienced some flooding in the past. The most vulnerable areas to flooding are located south of A Street
<b>Landslide</b>	The Local Planning Team determined that the City does not have unique vulnerabilities and impacts to landslides.
<b>Severe Weather</b> (thunderstorms, hail, tornado, strong winds/damaging winds, extreme temperatures)	The Local Planning Team determined that the City does not have unique vulnerabilities and impacts to severe weather.
<b>Volcanic Activity</b>	The Local Planning Team determined that the City does not have unique vulnerabilities and impacts to volcanic activity.



Hazards	Vulnerabilities and Impacts
<b>Wildfire</b> <i>(wildfire smoke)</i>	The City is located adjacent to forested and high-risk areas for wildfires. The Roslyn Urban Forest, a dry forest, is located on the eastern slopes of the Cascade Mountains, north and east of the developed footprint of the City which spans the entire southern boundary of the Forest. Additionally, evacuation is limited through Interstate 903 with very few options of egress during an emergency.  Wildfire smoke caused by wildfire activity within and outside of Kittitas Valley significantly impact the air quality in the City.
<b>Winter Weather</b> <i>(ice storms, heavy snow, and blizzards)</i>	The Local Planning Team determined that the City does not have unique vulnerabilities and impacts to winter weather.
<b>Communicable Diseases/Pandemic</b>	The Local Planning Team determined that the City does not have unique vulnerabilities and impacts to communicable diseases/pandemics.

The City evaluated whether vulnerability and impact in hazard-prone areas had increased, decreased, or remained the same for each natural hazard identified in this Hazard Mitigation Plan. Climate change, changes in population, infrastructure expansion, and economic shifts that can affect vulnerability were considered. For example, if planned development is in an identified hazard areas or is not built to the updated building codes, it may increase the community's vulnerability to future hazards and disasters. On the other hand, if development occurred with mitigation practices in place, the vulnerability may have remained the same or decreased. Additionally, shifting demographics (e.g., underserved population) were taken into consideration.

**Table 17** outlines if climate change has increased or decreased the City's vulnerability (i.e., exposure) and impact to each natural hazard over the past five (5) years, and the effect of climate change in the future probability of occurrence and impacts from each natural hazard.

**Table 17. Climate Change Current and Future Vulnerability and Impact**

Hazard	Vulnerability and Impact
<b>Current Vulnerability and Impact</b>	
Avalanche	Remained the Same
Communicable Diseases/Pandemic	Remained the Same
Dam and Levee Failure	Remained the Same
Drought	Remained the Same
Earthquake	Remained the Same
Extreme Cold/Extreme Heat ( <i>Severe Weather</i> )	Remained the Same
Flood	Remained the Same
Landslide	Remained the Same
Severe Weather ( <i>thunderstorms, hail, strong winds/damaging winds, and tornado</i> )	Remained the Same
Volcanic Activity	Remained the Same
Winter Weather ( <i>ice storms, heavy snow, blizzards</i> )	Remained the Same
Wildfire ( <i>Wildfire Smoke</i> )	Remained the Same





Hazard	Vulnerability and Impact
<b><i>Future Vulnerability and Impact</i></b>	
Avalanche	No Change is Anticipated
Communicable Diseases/Pandemic	No Change is Anticipated
Dam and Levee Failure	No Change is Anticipated
Drought	No Change is Anticipated
Earthquake	No Change is Anticipated
Extreme Cold/Extreme Heat ( <i>Severe Weather</i> )	No Change is Anticipated
Flood	No Change is Anticipated
Landslide	No Change is Anticipated
Severe Weather ( <i>thunderstorms, hail, strong winds/damaging winds, and tornado</i> )	No Change is Anticipated
Volcanic Activity	No Change is Anticipated
Winter Weather ( <i>ice storms, heavy snow, blizzards</i> )	No Change is Anticipated
Wildfire ( <i>Wildfire Smoke</i> )	No Change is Anticipated

**Table 18** outlines if changes in population within the City over the past five (5) years have increased or decreased the vulnerability (i.e., exposure) and impact to these natural hazards, and the anticipated effects changes in population may have on the future probability of occurrence and impacts from these natural hazards.

**Table 18. Changes in Population Current and Future Vulnerability and Impact**

Hazard	Vulnerability and Impact
<b><i>Current Vulnerability and Impact</i></b>	
Avalanche	Remained the Same
Communicable Diseases/Pandemic	Remained the Same
Dam and Levee Failure	Remained the Same
Drought	Remained the Same
Earthquake	Remained the Same
Extreme Cold/Extreme Heat ( <i>Severe Weather</i> )	Remained the Same
Flood	Remained the Same
Landslide	Remained the Same
Severe Weather ( <i>thunderstorms, hail, strong winds/damaging winds, and tornado</i> )	Remained the Same
Volcanic Activity	Remained the Same
Winter Weather ( <i>ice storms, heavy snow, blizzards</i> )	Remained the Same
Wildfire ( <i>Wildfire Smoke</i> )	Remained the Same



Hazard	Vulnerability and Impact
<b>Future Vulnerability and Impact</b>	
Avalanche	No Change is Anticipated
Communicable Diseases/Pandemic	No Change is Anticipated
Dam and Levee Failure	No Change is Anticipated
Drought	No Change is Anticipated
Earthquake	No Change is Anticipated
Extreme Cold/Extreme Heat ( <i>Severe Weather</i> )	No Change is Anticipated
Flood	No Change is Anticipated
Landslide	No Change is Anticipated
Severe Weather ( <i>thunderstorms, hail, strong winds/damaging winds, and tornado</i> )	No Change is Anticipated
Volcanic Activity	No Change is Anticipated
Winter Weather ( <i>ice storms, heavy snow, blizzards</i> )	No Change is Anticipated
Wildfire ( <i>Wildfire Smoke</i> )	No Change is Anticipated

**Table 19** outlines if development over the past five (5) years has increased or decreased the jurisdiction's vulnerability (i.e., exposure) and impact to these natural hazards, and the anticipated effects changes in development may have on the future probability of occurrence and impacts from these natural hazards.

**Table 19. Changes in Development Current and Future Vulnerability and Impact**

Hazard	Vulnerability and Impact
<b>Current Vulnerability and Impact</b>	
Avalanche	Remained the Same
Communicable Diseases/Pandemic	Remained the Same
Dam and Levee Failure	Remained the Same
Drought	Remained the Same
Earthquake	Remained the Same
Extreme Cold/Extreme Heat ( <i>Severe Weather</i> )	Remained the Same
Flood	Remained the Same
Landslide	Remained the Same
Severe Weather ( <i>thunderstorms, hail, strong winds/damaging winds, and tornado</i> )	Remained the Same
Volcanic Activity	Remained the Same
Winter Weather ( <i>ice storms, heavy snow, blizzards</i> )	Remained the Same
Wildfire ( <i>Wildfire Smoke</i> )	Remained the Same
<b>Future Vulnerability and Impact</b>	
Avalanche	No Change Anticipated



Hazard	Vulnerability and Impact
Communicable Diseases/Pandemic	No Change Anticipated
Dam and Levee Failure	No Change Anticipated
Drought	No Change Anticipated
Earthquake	No Change Anticipated
Extreme Cold/Extreme Heat ( <i>Severe Weather</i> )	No Change Anticipated
Flood	No Change Anticipated
Landslide	No Change Anticipated
Severe Weather ( <i>thunderstorms, hail, strong winds/damaging winds, and tornado</i> )	No Change Anticipated
Volcanic Activity	No Change Anticipated
Winter Weather ( <i>ice storms, heavy snow, blizzards</i> )	No Change Anticipated
Wildfire ( <i>Wildfire Smoke</i> )	No Change Anticipated

The City does not anticipate future major assets to be exposed or vulnerable to any of the natural hazards identified in this Hazard Mitigation Plan. However, the aging infrastructure can potentially become vulnerable overtime. Any new assets (e.g., new construction in hazard prone areas) will be constructed to adhere to the latest building codes and standards, and mitigation to protect them from identified and anticipated hazards, especially those that are expected to increase due to climate change.

## 10. HAZARD RISK RANKING

**Table 20** presents the local hazard ranking for the City of Roslyn of all hazards of concern listed in **Volume 1** of this Plan. This ranking summarizes how hazards vary for this jurisdiction. As described in detail in **Volume 1**, the ranking process involves an assessment of the likelihood of occurrence for each hazard, along with its potential impacts on people, property, and the economy.

**Table 20. Hazard Risk Ranking**

Hazard Event	Probability Factor	Sum of Weighted Extent Factors	Sum of Weighted Vulnerability Factors	Sum of Weighted Impact Factors	Consequence Score	Total Risk Score (Probability x Consequence)
Winter Weather (Blizzard/Heavy Snow, Ice Storm)	3	15	16	24	55	77
Earthquake	2	12	16	33	61	59
Strong Wind / Damaging Winds (Severe Weather)	3	9	16	15	40	59
Wildfire	2	18	11	30	59	58
Wildfire Smoke (Wildfire)	3	9	10	20	39	57
Flood	2	15	11	31	57	56



Hazard Event	Probability Factor	Sum of Weighted Extent Factors	Sum of Weighted Vulnerability Factors	Sum of Weighted Impact Factors	Consequence Score	Total Risk Score (Probability x Consequence)
Thunderstorms (Severe Weather)	2	6	16	26	48	48
Communicable Diseases / Pandemic	2	18	10	20	48	48
Cold Wave / Extreme Cold (Severe Weather)	2	12	12	20	44	45
Heat Wave / Extreme Heat (Severe Weather)	2	12	12	17	41	42
Drought	2	9	6	16	31	33
Hail (Severe Weather)	1	6	16	16	38	22
Tornado (Severe Weather)	1	6	16	16	38	22
Dam and Levee Failure	1	9	11	16	36	21
Volcanic Activity	1	12	6	15	33	20
Landslide	1	6	6	13	25	15
Avalanche	1	6	6	13	25	15
<p><b>Consequence:</b> Sum of <u>all</u> weighted factors.  <b>Extent:</b> Sum of the weighted <u>Extent</u> factors.  <b>Vulnerability:</b> Sum of the weighted <u>Vulnerability</u> factors.  <b>Impact:</b> Sum of the weighted <u>Impact</u> factors.  <b>Total Risk Score*</b> = Probability x Consequence  * Normalized to 100</p>						
Total Risk Score Legend						
Classification	Probability Factor	Extent	Vulnerability	Impact	Consequence Score	Total Risk Score
Low (L)	1	0 – 6	0 – 6	0 – 12	0 – 24	0 – 24
Medium (M)	2	7 – 12	7 – 12	13 – 26	25 – 50	25 – 52
High (H)	3	13 – 18	13 – 18	27 – 39	51 – 75	53 and above
<p>The <b>legend</b>—specifically the assignment of low, medium, and high—provides an additional means to qualitatively assess the probability factor, sum of weighted factors, and the total risk scores for each hazard. The <b>Consequence Score</b> represents the sum of the Extent, Vulnerability, and Impact Factors. The <b>Total Risk Score</b> is a measure of Probability and Consequence.</p>						



## 11. MITIGATION ACTIONS

This section includes the mitigation actions that were developed to address identified risks and vulnerabilities to hazards identified in this Plan. This Plan serves only to recommend mitigation measures based on the potential for risk reduction and available funding. Implementation of mitigation actions is dependent on risk reduction priorities, feasibility, and available funding. It is also dependent on the cooperation and support of the jurisdiction and/or department responsible for each action item.

The City of Roslyn agreed upon **31** mitigation actions that apply to the jurisdiction's properties where they have jurisdictional responsibility and authority. Three (3) mitigation actions were deleted/no longer needed. A summary of the City's mitigation actions status is listed in **Table 21**.

**Table 21. City of Roslyn Mitigation Actions Summary**

Status		Mitigation Action Total	
Ongoing		9	
In Progress/In Work		2	
Not Started		21	
Delayed/Deferred		0	
New		0	
TOTAL		32	
Completed		2	
Deleted/No Longer Needed		0	
Mitigation Actions per Hazard			
Avalanche	6	Landslide	6
Dam and Levee Failure	7	Severe Weather	11
Drought	7	Volcanic Activity	6
Earthquake	11	Wildfire	9
Flood	22	Winter Weather	8

These shared actions, some of which address all hazards, help to meet the following requirements:

- Does the Plan identify and analyze a comprehensive range of specific mitigation actions and projects for each jurisdiction being considered to reduce the effects of hazards, with emphasis on new and existing buildings and infrastructure?
- Does the Plan include one (1) or more action(s) per jurisdiction for each hazard identified within the risk assessment?

A detailed explanation of the Mitigation Strategy can be found in Chapter 5 of **Volume 1**.





<b>Mitigation Action</b>	Utilize and enhance existing public outreach programs to raise public awareness about natural hazards, the risk they pose, and ways to reduce those risks.				
<b>Action Number</b>	R-1	<b>Year Initiated / Anticipated Year of Initiation</b>	2012	<b>Prioritization Score</b>	40/40
<b>Goal(s) Addressed</b>	1, 2, 3, 4, 5		<b>Hazard(s) Mitigated</b>	Avalanche, Dam and Levee Failure, Drought, Earthquake, Flood, Landslide, Severe Weather, Volcanic Activity, Wildfire, Winter Weather	
<b>Project Status</b>	Ongoing	If Deleted/No Longer Needed, provide reason.		n/a	
<b>Benefits</b> (Loss Avoided)	Medium				
<b>Lead Agency / Organization</b>	City of Roslyn Planning and Building Department		<b>Supporting Agency / Organization</b> (If applicable)	n/a	
<b>Additional Participating Jurisdictions</b> (If applicable)	n/a				
<b>Project Duration</b>	Ongoing	<b>Estimated Cost</b>		Low	
<b>Potential Funding Source</b>	Local Budgeted Funds	If Other, you <b>must</b> identify a funding source.		n/a	
		Please provide further detail on Potential Funding Source.		General Fund (Staff Time)	
<b>Implementation Priority</b>	High	<b>Changes in Priority</b> (If applicable)			



Mitigation Action	Maintain political support for hazard mitigation and response planning and programs by annually monitoring the progress of initiatives identified in this Hazard Mitigation Plan.				
Action Number	R-2	Year Initiated / Anticipated Year of Initiation	2012	Prioritization Score	37/40
Goal(s) Addressed		1, 2, 3, 5	Hazard(s) Mitigated	Avalanche, Dam and Levee Failure, Drought, Earthquake, Flood, Landslide, Severe Weather, Volcanic Activity, Wildfire, Winter Weather	
Project Status		Ongoing	If Deleted/No Longer Needed, provide reason.	n/a	
Benefits (Loss Avoided)		Medium			
Lead Agency / Organization	City of Roslyn Mayor		Supporting Agency / Organization (If applicable)	City of Roslyn Planning and Building Department	
Additional Participating Jurisdictions (If applicable)	n/a				
Project Duration	Ongoing		Estimated Cost	Low	
Potential Funding Source	Local Budgeted Funds		If Other, you <u>must</u> identify a funding source.	n/a	
			Please provide further detail on Potential Funding Source.	General Fund (Staff Time)	
Implementation Priority	High	Changes in Priority (If applicable)			



Mitigation Action	Leverage mitigation opportunities by establishing and maintaining partnerships between public and private sectors.				
Action Number	R-3	Year Initiated / Anticipated Year of Initiation	2012	Prioritization Score	37/40
Goal(s) Addressed		1, 3	Hazard(s) Mitigated	Avalanche, Dam and Levee Failure, Drought, Earthquake, Flood, Landslide, Severe Weather, Volcanic Activity, Wildfire, Winter Weather	
Project Status		Ongoing	If Deleted/No Longer Needed, provide reason.	n/a	
Benefits (Loss Avoided)		Medium			
Lead Agency / Organization	City of Roslyn Planning and Building Department		Supporting Agency / Organization (If applicable)	n/a	
Additional Participating Jurisdictions (If applicable)	n/a				
Project Duration	Ongoing		Estimated Cost	Low	
Potential Funding Source	Local Budgeted Funds		If Other, you <b>must</b> identify a funding source.	n/a	
			Please provide further detail on Potential Funding Source.	General Fund (Staff Time)	
Implementation Priority	High	Changes in Priority (If applicable)			



Mitigation Action	Develop and implement a Continuity of Operations Plan (COOP) and/or Post-Disaster Recovery Plan to ensure critical City functions remain operational after an incident or disaster.				
Action Number	R-4	Year Initiated / Anticipated Year of Initiation	2012	Prioritization Score	37/40
Goal(s) Addressed		1, 4	Hazard(s) Mitigated	Avalanche, Dam and Levee Failure, Drought, Earthquake, Flood, Landslide, Severe Weather, Volcanic Activity, Wildfire, Winter Weather	
Project Status		Ongoing	If Deleted/No Longer Needed, provide reason.	n/a	
Benefits (Loss Avoided)		High			
Lead Agency / Organization		City of Roslyn Planning and Building Department	Supporting Agency / Organization (If applicable)	n/a	
Additional Participating Jurisdictions (If applicable)		n/a			
Project Duration		Long Term	Estimated Cost	Medium	
Potential Funding Source		Local Budgeted Funds, HMGP, BRIC, FMA	If Other, you <u>must</u> identify a funding source.	n/a	
			Please provide further detail on Potential Funding Source.	General Fund (Staff Time)	
Implementation Priority		High	Changes in Priority (If applicable)		



Mitigation Action	Replace Winston Bridge crossings with restrained piping when feasible and cost-effective.				
Action Number	R-5	Year Initiated / Anticipated Year of Initiation	2027	Prioritization Score	35/40
Goal(s) Addressed		1, 3	Hazard(s) Mitigated	Dam and Levee Failure, Earthquake, Flood	
Project Status		Not Started	If Deleted/No Longer Needed, provide reason.	n/a	
Benefits <i>(Loss Avoided)</i>		High			
Lead Agency / Organization	City of Roslyn Public Works Department		Supporting Agency / Organization <i>(If applicable)</i>	n/a	
Additional Participating Jurisdictions <i>(If applicable)</i>	n/a				
Project Duration	Short Term		Estimated Cost	High	
Potential Funding Source	State Special Funds, Other		If Other, you <b>must</b> identify a funding source.	Enterprise Surplus Funds	
			Please provide further detail on Potential Funding Source.	State of Washington Department of Ecology Water Quality Funds, DWFR	
Implementation Priority	High	Changes in Priority <i>(If applicable)</i>			





Mitigation Action	Replace the City's main transmission waterline (to Winston Bridge).				
Action Number	R-6	Year Initiated / Anticipated Year of Initiation	2027	Prioritization Score	36/40
Goal(s) Addressed		1, 3	Hazard(s) Mitigated	Earthquake	
Project Status		Not Started	If Deleted/No Longer Needed, provide reason.	n/a	
Benefits <i>(Loss Avoided)</i>		High			
Lead Agency / Organization	City of Roslyn Public Works Department		Supporting Agency / Organization <i>(If applicable)</i>	n/a	
Additional Participating Jurisdictions <i>(If applicable)</i>	n/a				
Project Duration	Short Term		Estimated Cost	High	
Potential Funding Source	State Special Funds, Other		If Other, you <b>must</b> identify a funding source.	Enterprise Surplus Funds	
			Please provide further detail on Potential Funding Source.	State of Washington Department of Ecology Water Quality Funds, DWFR	
Implementation Priority	High	Changes in Priority <i>(If applicable)</i>			



Mitigation Action	Replace the City's main transmission waterline from the Winston Bridge to the City of Roslyn Water Treatment Plant.				
Action Number	R-7	Year Initiated / Anticipated Year of Initiation	2027	Prioritization Score	36/40
Goal(s) Addressed		1, 3	Hazard(s) Mitigated	Earthquake	
Project Status		Not Started	If Deleted/No Longer Needed, provide reason.	n/a	
Benefits <i>(Loss Avoided)</i>		High			
Lead Agency / Organization	City of Roslyn Public Works Department		Supporting Agency / Organization <i>(If applicable)</i>	n/a	
Additional Participating Jurisdictions <i>(If applicable)</i>	n/a				
Project Duration	Long Term		Estimated Cost	High	
Potential Funding Source	State Special Funds, Other		If Other, you <u>must</u> identify a funding source.	Enterprise Surplus Funds	
			Please provide further detail on Potential Funding Source.	State of Washington Department of Ecology Water Quality Funds, DWFR	
Implementation Priority	High	Changes in Priority <i>(If applicable)</i>			



Mitigation Action	Replace the main transmission waterline from the City of Roslyn Water Treatment Plant to the City’s Water Reservoir.				
Action Number	R-8	Year Initiated / Anticipated Year of Initiation	2027	Prioritization Score	35/40
Goal(s) Addressed		1, 3	Hazard(s) Mitigated	Earthquake	
Project Status		Not Started	If Deleted/No Longer Needed, provide reason.	n/a	
Benefits <i>(Loss Avoided)</i>		Medium			
Lead Agency / Organization	City of Roslyn Public Works Department		Supporting Agency / Organization <i>(If applicable)</i>	n/a	
Additional Participating Jurisdictions <i>(If applicable)</i>	n/a				
Project Duration	Long Term		Estimated Cost	High	
Potential Funding Source	State Special Funds, Other		If Other, you <b>must</b> identify a funding source.	Enterprise Surplus Funds	
			Please provide further detail on Potential Funding Source.	State of Washington Department of Ecology Water Quality Funds, DWFR	
Implementation Priority	High	Changes in Priority <i>(If applicable)</i>			



<b>Mitigation Action</b>	Complete replacement of pinch point in the stormwater system at Penn Place Apartments.				
<b>Action Number</b>	R-9	<b>Year Initiated / Anticipated Year of Initiation</b>	n/a	<b>Prioritization Score</b>	n/a
<b>Goal(s) Addressed</b>	1, 3, 5		<b>Hazard(s) Mitigated</b>	Flood	
<b>Project Status</b>	Completed		If Deleted/No Longer Needed, provide reason.	n/a	
<b>Benefits</b> (Loss Avoided)	n/a				
<b>Lead Agency / Organization</b>	City of Roslyn Public Works Department		<b>Supporting Agency / Organization</b> (If applicable)	n/a	
<b>Additional Participating Jurisdictions</b> (If applicable)	n/a				
<b>Project Duration</b> (Select one)	n/a		<b>Estimated Cost</b> (Select one)	n/a	
<b>Potential Funding Source</b>	n/a	If Other, you <b>must</b> identify a funding source.		n/a	
		Please provide further detail on Potential Funding Source.		n/a	
<b>Implementation Priority</b>	n/a	<b>Changes in Priority</b> (If applicable)	Project has been completed with funding from the Washington State Department of Ecology and City match.		



Mitigation Action	Replace V-ditch catch basins with Type-40 catch basins located throughout the City.				
Action Number	R-10	Year Initiated / Anticipated Year of Initiation	2027	Prioritization Score	36/40
Goal(s) Addressed	1, 3, 5		Hazard(s) Mitigated	Flood	
Project Status	Not Started		If Deleted/No Longer Needed, provide reason.	n/a	
Benefits <i>(Loss Avoided)</i>	High				
Lead Agency / Organization	City of Roslyn Public Works Department		Supporting Agency / Organization <i>(If applicable)</i>	n/a	
Additional Participating Jurisdictions <i>(If applicable)</i>	n/a				
Project Duration	Short Term		Estimated Cost	Medium	
Potential Funding Source	State Special Funds, HMGP, BRIC, FMA, Other		If Other, you <u>must</u> identify a funding source.	Enterprise Surplus Funds	
			Please provide further detail on Potential Funding Source.	State of Washington Department of Ecology Water Quality Funds	
Implementation Priority	High	Changes in Priority <i>(If applicable)</i>			





<b>Mitigation Action</b>	Replace trunk lines and add access points to the stormwater system.				
<b>Action Number</b>	R-11	<b>Year Initiated / Anticipated Year of Initiation</b>	2027	<b>Prioritization Score</b>	36/40
<b>Goal(s) Addressed</b>	1, 3, 5		<b>Hazard(s) Mitigated</b>	Flood	
<b>Project Status</b>	Not Started		If Deleted/No Longer Needed, provide reason.	n/a	
<b>Benefits</b> (Loss Avoided)	High				
<b>Lead Agency / Organization</b>	City of Roslyn Public Works Department		<b>Supporting Agency / Organization</b> (If applicable)	n/a	
<b>Additional Participating Jurisdictions</b> (If applicable)	n/a				
<b>Project Duration</b>	Long Term		<b>Estimated Cost</b>	High	
<b>Potential Funding Source</b>	State Special Funds, HMGP, BRIC, FMA, Other		If Other, you <b>must</b> identify a funding source.	Enterprise Surplus Funds	
			Please provide further detail on Potential Funding Source.	State of Washington Department of Ecology Water Quality Funds	
<b>Implementation Priority</b>	High	<b>Changes in Priority</b> (If applicable)			



Mitigation Action	Upsize intake structures at inlets to the stormwater system.				
Action Number	R-12	Year Initiated / Anticipated Year of Initiation	2027	Prioritization Score	36/40
Goal(s) Addressed		1, 3, 5	Hazard(s) Mitigated	Flood	
Project Status		Not Started	If Deleted/No Longer Needed, provide reason.	n/a	
Benefits <i>(Loss Avoided)</i>		High			
Lead Agency / Organization	City of Roslyn Public Works Department		Supporting Agency / Organization <i>(If applicable)</i>	n/a	
Additional Participating Jurisdictions <i>(If applicable)</i>	n/a				
Project Duration	Long Term		Estimated Cost	High	
Potential Funding Source	State Special Funds, HMGP, BRIC, FMA, Other		If Other, you <u>must</u> identify a funding source.	Enterprise Surplus Funds	
			Please provide further detail on Potential Funding Source.	State of Washington Department of Ecology Water Quality Funds	
Implementation Priority	High	Changes in Priority <i>(If applicable)</i>			



Mitigation Action	Create channel roughness and other water-retaining systems in the Roslyn Urban Forest.				
Action Number	R-13	Year Initiated / Anticipated Year of Initiation	2027	Prioritization Score	31/40
Goal(s) Addressed		1	Hazard(s) Mitigated	Flood	
Project Status		Not Started	If Deleted/No Longer Needed, provide reason.	n/a	
Benefits <i>(Loss Avoided)</i>		High			
Lead Agency / Organization	City of Roslyn Building and Planning Department		Supporting Agency / Organization <i>(If applicable)</i>	n/a	
Additional Participating Jurisdictions <i>(If applicable)</i>	n/a				
Project Duration	Long Term		Estimated Cost	High	
Potential Funding Source	State Special Funds, HMGP, BRIC, FMA, Other		If Other, you <b>must</b> identify a funding source.	Enterprise Surplus Funds	
			Please provide further detail on Potential Funding Source.	Washington State Department of Natural Resources Funds	
Implementation Priority	High	Changes in Priority <i>(If applicable)</i>			



Mitigation Action	Ensure adequate drainage is available for roadbeds and trails in the Roslyn Urban Forest.				
Action Number	R-14	Year Initiated / Anticipated Year of Initiation	2027	Prioritization Score	36/40
Goal(s) Addressed		1	Hazard(s) Mitigated	Flood, Severe Weather	
Project Status		Not Started	If Deleted/No Longer Needed, provide reason.	n/a	
Benefits <i>(Loss Avoided)</i>		Medium			
Lead Agency / Organization	City of Roslyn Planning and Building Department		Supporting Agency / Organization <i>(If applicable)</i>	n/a	
Additional Participating Jurisdictions <i>(If applicable)</i>	n/a				
Project Duration	Long Term		Estimated Cost	High	
Potential Funding Source	State Special Funds, HMGP, BRIC, FMA, Other		If Other, you <u>must</u> identify a funding source.	Enterprise Surplus Funds	
			Please provide further detail on Potential Funding Source.	Washington State Department of Natural Resources Funds	
Implementation Priority	High	Changes in Priority <i>(If applicable)</i>			



Mitigation Action	Upsize shaded fuel break in the forested perimeter of the Roslyn Urban Forest.				
Action Number	R-15	Year Initiated / Anticipated Year of Initiation	2012	Prioritization Score	34/40
Goal(s) Addressed	1, 2, 5		Hazard(s) Mitigated	Wildfire	
Project Status	Ongoing		If Deleted/No Longer Needed, provide reason.	n/a	
Benefits (Loss Avoided)	High				
Lead Agency / Organization	City of Roslyn Planning and Building Department		Supporting Agency / Organization (If applicable)	n/a	
Additional Participating Jurisdictions (If applicable)	n/a				
Project Duration	Short Term		Estimated Cost	Low	
Potential Funding Source	Local Budgeted Funds, HMGP, BRIC, Other		If Other, you <u>must</u> identify a funding source.	n/a	
			Please provide further detail on Potential Funding Source.	General Fund (Staff Time), Washington State Department of Natural Resources Funds	
Implementation Priority	High	Changes in Priority (If applicable)			





Mitigation Action	Implement the Roslyn Urban Forest Land Stewardship Plan and dry site management techniques to increase forest health and Firewise the Forest.				
Action Number	R-16	Year Initiated / Anticipated Year of Initiation	2012	Prioritization Score	36/40
Goal(s) Addressed		1, 2	Hazard(s) Mitigated	Wildfire	
Project Status		In Progress/In Work	If Deleted/No Longer Needed, provide reason.	n/a	
Benefits <i>(Loss Avoided)</i>		Medium			
Lead Agency / Organization	City of Roslyn Planning and Building Department		Supporting Agency / Organization <i>(If applicable)</i>	n/a	
Additional Participating Jurisdictions <i>(If applicable)</i>	n/a				
Project Duration	Long Term		Estimated Cost	High	
Potential Funding Source	Local Budgeted Funds, HMGP, BRIC, Other		If Other, you <u>must</u> identify a funding source.	n/a	
			Please provide further detail on Potential Funding Source.	General Fund (Staff Time), Washington State Department of Natural Resources Funds	
Implementation Priority	High	Changes in Priority <i>(If applicable)</i>			



<b>Mitigation Action</b>	Acquire a water tender for the City of Roslyn Fire Department.				
<b>Action Number</b>	R-17	<b>Year Initiated / Anticipated Year of Initiation</b>	n/a	<b>Prioritization Score</b>	n/a
<b>Goal(s) Addressed</b>	1, 4		<b>Hazard(s) Mitigated</b>	Wildfire	
<b>Project Status</b>	Completed		<i>If Deleted/No Longer Needed, provide reason.</i>	n/a	
<b>Project can be Funded Under Existing Programs / Budgets</b> <i>(Select one)</i>	n/a				
<b>Lead Agency / Organization</b>	City of Roslyn Fire Department		<b>Supporting Agency / Organization</b> <i>(If applicable)</i>	n/a	
<b>Additional Participating Jurisdictions</b> <i>(If applicable)</i>	n/a				
<b>Project Duration</b>	n/a		<b>Estimated Cost</b>	n/a	
<b>Potential Funding Source</b>	n/a	<i>If Other, you <b>must</b> identify a funding source.</i>		n/a	
		<i>Please provide further detail on Potential Funding Source.</i>		n/a	
<b>Implementation Priority</b>	n/a	<b>Changes in Priority</b> <i>(If applicable)</i>	The water tender was acquired through a Tax levy.		



Mitigation Action	Ensure wildland fire training is available for the City of Roslyn Fire Department.				
Action Number	R-18	Year Initiated / Anticipated Year of Initiation	2019	Prioritization Score	39/40
Goal(s) Addressed		1, 4	Hazard(s) Mitigated	Wildfire	
Project Status		In Progress/In Work	If Deleted/No Longer Needed, provide reason.	n/a	
Benefits <i>(Loss Avoided)</i>		High			
Lead Agency / Organization	City of Roslyn Fire Department		Supporting Agency / Organization <i>(If applicable)</i>	n/a	
Additional Participating Jurisdictions <i>(If applicable)</i>	n/a				
Project Duration	Short Term		Estimated Cost	Low	
Potential Funding Source	Local Budgeted Funds, Other		If Other, you <u>must</u> identify a funding source.	Washington State Department of Natural Resources Funds	
			Please provide further detail on Potential Funding Source.	General Fund (Staff Time)	
Implementation Priority	High	Changes in Priority <i>(If applicable)</i>	Currently, the training is grant funded and will end in 2025. The City does not have resources to continue after that date.		



Mitigation Action	Ensure roadbeds remain available in the Roslyn Urban Forest for emergency traffic during a wildfire incident.				
Action Number	R-19	Year Initiated / Anticipated Year of Initiation	2027	Prioritization Score	34/40
Goal(s) Addressed		1	Hazard(s) Mitigated	Wildfire	
Project Status		Not Started	If Deleted/No Longer Needed, provide reason.	n/a	
Benefits <i>(Loss Avoided)</i>		Medium			
Lead Agency / Organization	City of Roslyn Public Works Department		Supporting Agency / Organization <i>(If applicable)</i>	n/a	
Additional Participating Jurisdictions <i>(If applicable)</i>	n/a				
Project Duration	Short Term		Estimated Cost	Medium	
Potential Funding Source	Local Budgeted Funds, Other		If Other, you <b>must</b> identify a funding source.	Assistance to Firefighters Grants (AFG) Program	
			Please provide further detail on Potential Funding Source.	General Fund (Staff Time)	
Implementation Priority	High	Changes in Priority <i>(If applicable)</i>			



Mitigation Action	Conduct a seismic retrofit buildings of buildings prone to earthquake damage, in particular historic buildings constructed with unreinforced masonry.				
Action Number	R-20	Year Initiated / Anticipated Year of Initiation	2027	Prioritization Score	27/40
Goal(s) Addressed		1, 2, 3, 5	Hazard(s) Mitigated	Earthquake	
Project Status		Not Started	If Deleted/No Longer Needed, provide reason.	n/a	
Benefits (Loss Avoided)		Medium			
Lead Agency / Organization	City of Roslyn Planning and Building Department		Supporting Agency / Organization (If applicable)	n/a	
Additional Participating Jurisdictions (If applicable)	n/a				
Project Duration	Long Term		Estimated Cost	High	
Potential Funding Source	Local Budgeted Funds, HMGP, BRIC		If Other, you <u>must</u> identify a funding source.	n/a	
			Please provide further detail on Potential Funding Source.	General Fund (Staff Time)	
Implementation Priority	Medium	Changes in Priority (If applicable)			



Mitigation Action	Identify and acquire land to be used for stormwater retention in the Duck Town area.				
Action Number	R-21	Year Initiated / Anticipated Year of Initiation	2027	Prioritization Score	25/40
Goal(s) Addressed		1, 3, 5	Hazard(s) Mitigated	Flood, Severe Weather	
Project Status		Not Started	If Deleted/No Longer Needed, provide reason.	n/a	
Benefits <i>(Loss Avoided)</i>		High			
Lead Agency / Organization	City of Roslyn Mayor, City of Roslyn Council		Supporting Agency / Organization <i>(If applicable)</i>	n/a	
Additional Participating Jurisdictions <i>(If applicable)</i>	n/a				
Project Duration	Long Term		Estimated Cost	High	
Potential Funding Source	Local Budgeted Funds, State Special Funds, HMGP, BRIC, FMA		If Other, you <b>must</b> identify a funding source.	State of Washington Department of Ecology Water Quality Funds	
			Please provide further detail on Potential Funding Source.	City Stormwater Funds	
Implementation Priority	Medium	Changes in Priority <i>(If applicable)</i>			





Mitigation Action	Ensure creeks that capture flows from the stormwater system in Pioneer Park/Runje Field and the Duck Town area remain clear from obstruction.				
Action Number	R-22	Year Initiated / Anticipated Year of Initiation	2027	Prioritization Score	28/40
Goal(s) Addressed	1, 2, 5		Hazard(s) Mitigated	Flood	
Project Status	Not Started		If Deleted/No Longer Needed, provide reason.	n/a	
Benefits (Loss Avoided)	Medium				
Lead Agency / Organization	City of Roslyn Public Works Department		Supporting Agency / Organization (If applicable)	n/a	
Additional Participating Jurisdictions (If applicable)	n/a				
Project Duration	Short Term		Estimated Cost	Medium	
Potential Funding Source	Local Budgeted Funds		If Other, you <b>must</b> identify a funding source.	n/a	
			Please provide further detail on Potential Funding Source.	City Stormwater Funds	
Implementation Priority	Medium	Changes in Priority (If applicable)			



Mitigation Action	Install an adequate stormwater system in the Brookside neighborhood.				
Action Number	R-23	Year Initiated / Anticipated Year of Initiation	2027	Prioritization Score	28/40
Goal(s) Addressed		1, 2	Hazard(s) Mitigated	Flood	
Project Status		Not Started	If Deleted/No Longer Needed, provide reason.	n/a	
Benefits <i>(Loss Avoided)</i>		High			
Lead Agency / Organization	City of Roslyn Public Works Department		Supporting Agency / Organization <i>(If applicable)</i>	n/a	
Additional Participating Jurisdictions <i>(If applicable)</i>	n/a				
Project Duration	Long Term		Estimated Cost	High	
Potential Funding Source	Local Budgeted Funds, State Special Funds		If Other, you <b>must</b> identify a funding source.	n/a	
			Please provide further detail on Potential Funding Source.	City Stormwater Funds, State of Washington Department of Ecology Water Quality Funds	
Implementation Priority	Medium	Changes in Priority <i>(If applicable)</i>			



Mitigation Action	Install an adequate stormwater system in the core of Downtown.				
Action Number	R-24	Year Initiated / Anticipated Year of Initiation	2027	Prioritization Score	27/40
Goal(s) Addressed		1, 2	Hazard(s) Mitigated	Flood	
Project Status		Not Started	If Deleted/No Longer Needed, provide reason.	n/a	
Benefits <i>(Loss Avoided)</i>		High			
Lead Agency / Organization	City of Roslyn Public Works Department		Supporting Agency / Organization <i>(If applicable)</i>	n/a	
Additional Participating Jurisdictions <i>(If applicable)</i>	n/a				
Project Duration	Long Term		Estimated Cost	High	
Potential Funding Source	Local Budgeted Funds, State Special Funds		If Other, you <b>must</b> identify a funding source.	n/a	
			Please provide further detail on Potential Funding Source.	City Stormwater Funds, State of Washington Department of Ecology Water Quality Funds	
Implementation Priority	Medium	Changes in Priority <i>(If applicable)</i>			



Mitigation Action	Install an adequate stormwater system in Pioneer Park/Runje Field.				
Action Number	R-25	Year Initiated / Anticipated Year of Initiation	2027	Prioritization Score	31/40
Goal(s) Addressed		1, 2	Hazard(s) Mitigated	Flood	
Project Status		Not Started	If Deleted/No Longer Needed, provide reason.	n/a	
Benefits (Loss Avoided)		High			
Lead Agency / Organization	City of Roslyn Public Works Department		Supporting Agency / Organization (If applicable)	n/a	
Additional Participating Jurisdictions (If applicable)	n/a				
Project Duration	Long Term		Estimated Cost	High	
Potential Funding Source	Local Budgeted Funds, State Special Funds		If Other, you <b>must</b> identify a funding source.	n/a	
			Please provide further detail on Potential Funding Source.	City Stormwater Funds, State of Washington Department of Ecology Water Quality Funds	
Implementation Priority	High	Changes in Priority (If applicable)			



Mitigation Action	Install an adequate stormwater system in the 5 <sup>th</sup> Street addition neighborhood.				
Action Number	R-26	Year Initiated / Anticipated Year of Initiation	2027	Prioritization Score	27/40
Goal(s) Addressed		1, 2	Hazard(s) Mitigated	Flood	
Project Status		Not Started	If Deleted/No Longer Needed, provide reason.	n/a	
Benefits <i>(Loss Avoided)</i>		High			
Lead Agency / Organization	City of Roslyn Public Works Department		Supporting Agency / Organization <i>(If applicable)</i>	n/a	
Additional Participating Jurisdictions <i>(If applicable)</i>	n/a				
Project Duration	Long Term		Estimated Cost	High	
Potential Funding Source	Local Budgeted Funds, State Special Funds		If Other, you <u>must</u> identify a funding source.	n/a	
			Please provide further detail on Potential Funding Source.	City Stormwater Funds, State of Washington Department of Ecology Water Quality Funds	
Implementation Priority	Medium	Changes in Priority <i>(If applicable)</i>			



Mitigation Action	Install an adequate stormwater system in the 3 <sup>rd</sup> Street neighborhood.				
Action Number	R-27	Year Initiated / Anticipated Year of Initiation	2027	Prioritization Score	27/40
Goal(s) Addressed	1, 2		Hazard(s) Mitigated	Flood	
Project Status	Not Started		If Deleted/No Longer Needed, provide reason.	n/a	
Benefits <i>(Loss Avoided)</i>	High				
Lead Agency / Organization	City of Roslyn Public Works Department		Supporting Agency / Organization <i>(If applicable)</i>	n/a	
Additional Participating Jurisdictions <i>(If applicable)</i>	n/a				
Project Duration	Long Term		Estimated Cost	High	
Potential Funding Source	Local Budgeted Funds, State Special Funds		If Other, you <u>must</u> identify a funding source.	n/a	
			Please provide further detail on Potential Funding Source.	City Stormwater Funds, State of Washington Department of Ecology Water Quality Funds	
Implementation Priority	Medium	Changes in Priority <i>(If applicable)</i>			



Mitigation Action	Manage potential increased runoff from new development by adopting regulations that require new developments to mitigate their impacts.				
Action Number	R-28	Year Initiated / Anticipated Year of Initiation	2027	Prioritization Score	32/40
Goal(s) / Objective(s) Addressed	1, 2, 3, 4, 5		Hazard(s) Mitigated	Flood, Severe Weather	
Project Status	Not Started		If Deleted/No Longer Needed, provide reason.	n/a	
Benefits (Loss Avoided)	High				
Lead Agency / Organization	City of Roslyn Planning and Building Department		Supporting Agency / Organization (If applicable)	City of Roslyn Council	
Additional Participating Jurisdictions (If applicable)	n/a				
Project Duration	Short Term		Estimated Cost	Low	
Potential Funding Source	Local Budgeted Funds		If Other, you <u>must</u> identify a funding source.	n/a	
			Please provide further detail on Potential Funding Source.	General Fund (Staff Time)	
Implementation Priority	High	Changes in Priority (If applicable)			



Mitigation Action	Improve the water supply line to reduce water system losses.				
Action Number	R-29	Year Initiated / Anticipated Year of Initiation	2012	Prioritization Score	30/40
Goal(s) Addressed		1, 2, 3, 4, 5	Hazard(s) Mitigated	Drought	
Project Status		Ongoing	If Deleted/No Longer Needed, provide reason.	n/a	
Benefits <i>(Loss Avoided)</i>		Medium			
Lead Agency / Organization	City of Roslyn Public Works Department		Supporting Agency / Organization <i>(If applicable)</i>	n/a	
Additional Participating Jurisdictions <i>(If applicable)</i>	n/a				
Project Duration	Short Term		Estimated Cost	Medium	
Potential Funding Source	Local Budgeted Funds, State Special Funds		If Other, you <b>must</b> identify a funding source.	n/a	
			Please provide further detail on Potential Funding Source.	City Stormwater Funds, State of Washington Department of Ecology Water Quality Funds	
Implementation Priority	High	Changes in Priority <i>(If applicable)</i>			





Mitigation Action	Consider adoption of appropriate regulatory standards that require new developments to place utility cables underground in business zones and major transportation routes.				
Action Number	R-30	Year Initiated / Anticipated Year of Initiation	2027	Prioritization Score	30/40
Goal(s) Addressed	1, 2, 5		Hazard(s) Mitigated	Severe Weather, Winter Weather	
Project Status	Not Started		If Deleted/No Longer Needed, provide reason.	n/a	
Benefits (Loss Avoided)	Medium				
Lead Agency / Organization	City of Roslyn Planning and Building Department		Supporting Agency / Organization (If applicable)	n/a	
Additional Participating Jurisdictions (If applicable)	n/a				
Project Duration	Short Term		Estimated Cost	Low	
Potential Funding Source	Local Budgeted Funds		If Other, you <b>must</b> identify a funding source.	n/a	
			Please provide further detail on Potential Funding Source.	General Fund (Staff Time)	
Implementation Priority	Medium	Changes in Priority (If applicable)			



Mitigation Action	Actively support and participate in the implementation, monitoring, maintenance, and updating of the Kittitas County Hazard Mitigation Plan, as outlined and defined in Volume 1.				
Action Number	R-31	Year Initiated / Anticipated Year of Initiation	2012	Prioritization Score	32/40
Goal(s) Addressed	1, 2, 3, 4, 5		Hazard(s) Mitigated	Avalanche, Dam and Levee Failure, Drought, Earthquake, Flood, Landslide, Severe Weather, Volcanic Activity, Wildfire, Winter Weather	
Project Status	Ongoing		If Deleted/No Longer Needed, provide reason.	n/a	
Benefits (Loss Avoided)	Medium				
Lead Agency / Organization	City of Roslyn Planning and Building Department		Supporting Agency / Organization (If applicable)	n/a	
Additional Participating Jurisdictions (If applicable)	n/a				
Project Duration	Short Term		Estimated Cost	Low	
Potential Funding Source	Local Budgeted Funds		If Other, you <u>must</u> identify a funding source.	n/a	
			Please provide further detail on Potential Funding Source.	General Fund (Staff Time), City Street Fund	
Implementation Priority	High	Changes in Priority (If applicable)			



Mitigation Action	Continue to support through active participation the countywide initiatives identified in Volume 1 of the Kittitas County Hazard Mitigation Plan.				
Action Number	R-32	Year Initiated / Anticipated Year of Initiation	2012	Prioritization Score	32/40
Goal(s) Addressed	1, 3, 4		Hazard(s) Mitigated	Avalanche, Dam and Levee Failure, Drought, Earthquake, Flood, Landslide, Severe Weather, Volcanic Activity, Wildfire, Winter Weather	
Project Status	Ongoing		If Deleted/No Longer Needed, provide reason.	n/a	
Benefits <i>(Loss Avoided)</i>	Medium				
Lead Agency / Organization	City of Planning and Building Department		Supporting Agency / Organization <i>(If applicable)</i>	City of Roslyn City Council, City of Roslyn Finance and Utilities Department, City of Roslyn Public Works Department, City of Roslyn Police Department, City of Roslyn Fire Department	
Additional Participating Jurisdictions <i>(If applicable)</i>	n/a				
Project Duration	Ongoing		Estimated Cost	Low	
Potential Funding Source	Local Budgeted Funds		If Other, you <b>must</b> identify a funding source.	n/a	
			Please provide further detail on Potential Funding Source.	General Fund (Staff Time)	
Implementation Priority	High	Changes in Priority <i>(If applicable)</i>			



Mitigation Action	Consider participation in the National Weather Service “StormReady” Program.				
Action Number	R-33	Year Initiated / Anticipated Year of Initiation	2012	Prioritization Score	28/40
Goal(s) Addressed		1, 3, 4	Hazard(s) Mitigated	Flood, Severe Weather, Winter Weather	
Project Status		Ongoing	If Deleted/No Longer Needed, provide reason.	n/a	
Benefits (Loss Avoided)		High			
Lead Agency / Organization	City of Planning and Building Department		Supporting Agency / Organization (If applicable)	City of Roslyn City Council, City of Roslyn Finance and Utilities Department, City of Roslyn Public Works Department, City of Roslyn Police Department, City of Roslyn Fire Department	
Additional Participating Jurisdictions (If applicable)	n/a				
Project Duration	Short Term		Estimated Cost	Low	
Potential Funding Source	Local Budgeted Funds		If Other, you <b>must</b> identify a funding source.	n/a	
			Please provide further detail on Potential Funding Source.	General Fund (Staff Time)	
Implementation Priority	Medium	Changes in Priority (If applicable)			



<b>Mitigation Action</b>	Conduct a detailed flood study for the City of Roslyn.				
<b>Action Number</b>	R-34	<b>Year Initiated / Anticipated Year of Initiation</b>	2027	<b>Prioritization Score</b>	28/40
<b>Goal(s) Addressed</b>	1, 2, 3, 4		<b>Hazard(s) Mitigated</b>	Flood	
<b>Project Status</b>	Not Started		<i>If Deleted/No Longer Needed, provide reason.</i>	n/a	
<b>Benefits</b> <i>(Loss Avoided)</i>	High				
<b>Lead Agency / Organization</b>	City of Roslyn Public Works Department		<b>Supporting Agency / Organization</b> <i>(If applicable)</i>	n/a	
<b>Additional Participating Jurisdictions</b> <i>(If applicable)</i>	n/a				
<b>Project Duration</b>	Short Term		<b>Estimated Cost</b>	Medium	
<b>Potential Funding Source</b>	Local Budgeted Funds, BRIC		<i>If Other, you <b>must</b> identify a funding source.</i>	n/a	
			Please provide further detail on Potential Funding Source.	General Fund (Staff Time)	
<b>Implementation Priority</b>	Medium	<b>Changes in Priority</b> <i>(If applicable)</i>			



## APPENDIX A. HAZARD MAPS

<b>Figure 1</b>	City of Roslyn Planning Area
<b>Figure 2</b>	Critical Facilities within and around the City boundary.
<b>Figure 3</b>	Liquefaction Susceptibility (Earthquake) <i>Helps assess potential damage from earthquakes in the City.</i>
<b>Figure 4</b>	Special Flood Hazard Area (SFHA) <i>Includes each Flood Zone, and the 500-year floodplain. Flood Insurance Rate Maps (FIRMs) show the flood zones, floodplain boundaries, and Base Floor Elevation (BFE) and are used for floodplain management, flood insurance ratings, and to determine flood insurance requirements. FIRMs show areas with a 1% chance of flooding each year, commonly known as the 100-year floodplains, and are illustrated as the SFHA. The 500-year floodplains show areas with a 0.2% chance of flooding each year.</i>
<b>Figure 5</b>	Wildland Fire Hazard Area
<b>Figure 6</b>	Wildland Urban Interface Map



Figure 1. City of Roslyn Planning Area

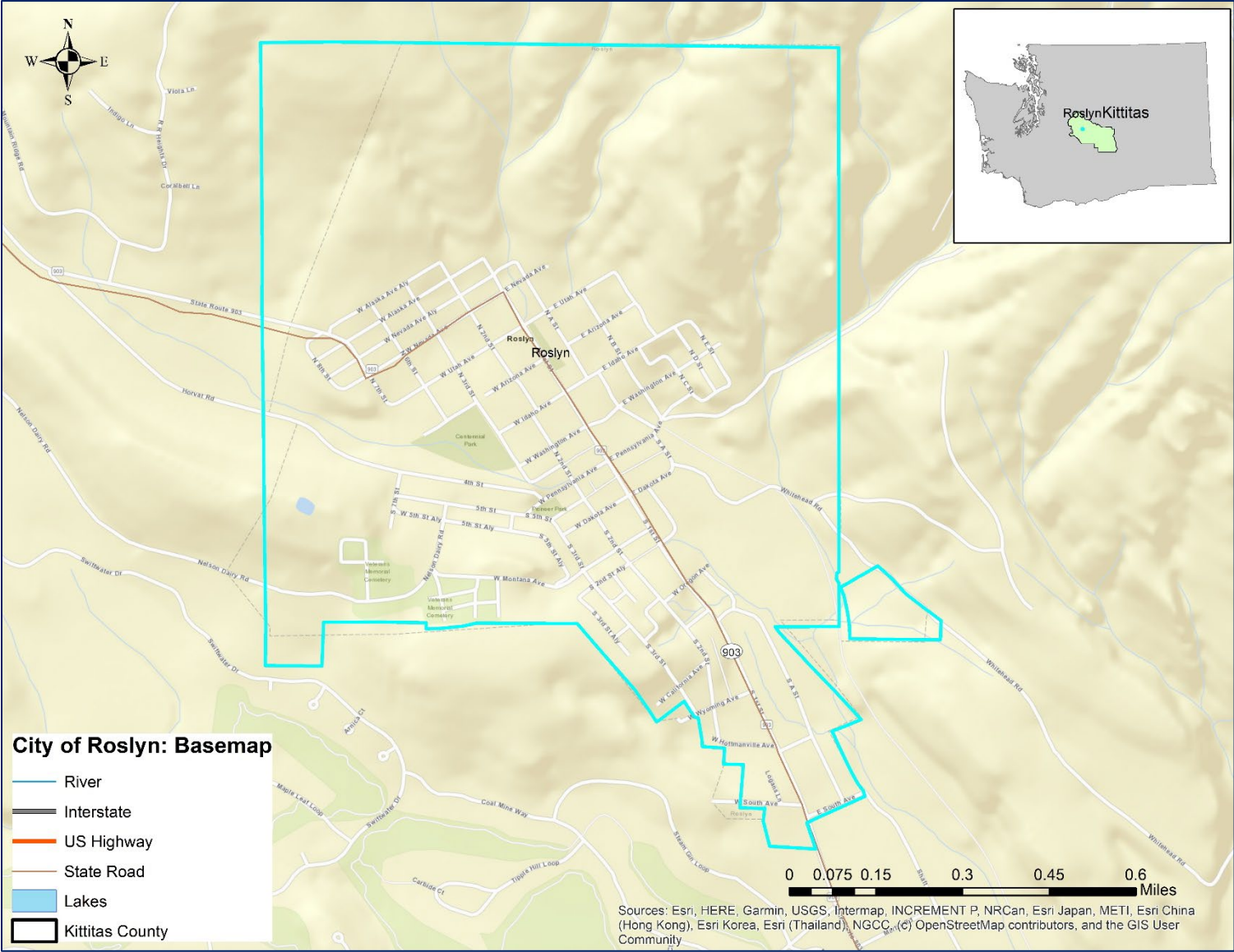






Figure 2. City of Roslyn Critical Facilities

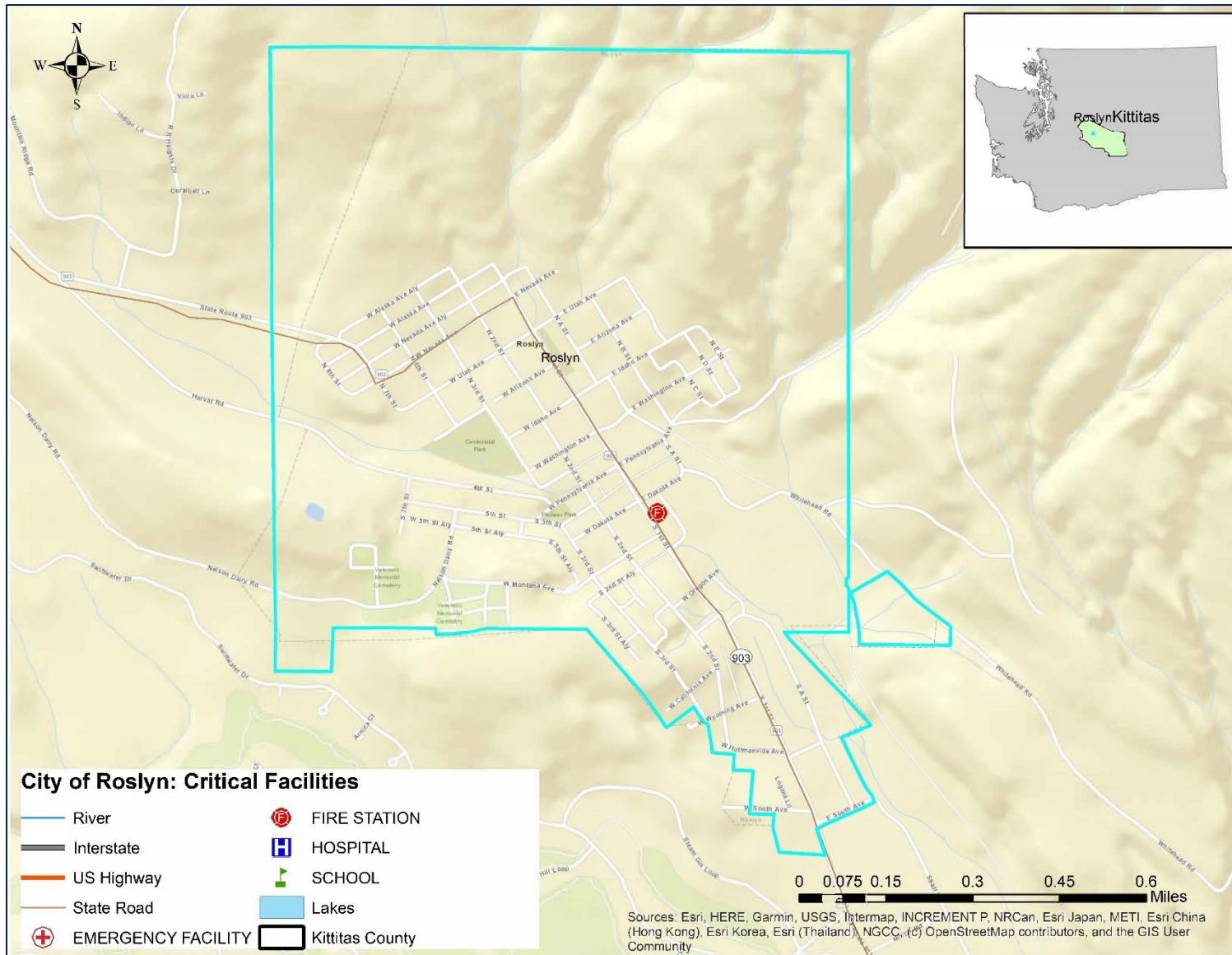




Figure 3. Liquefaction Susceptibility (Earthquake)

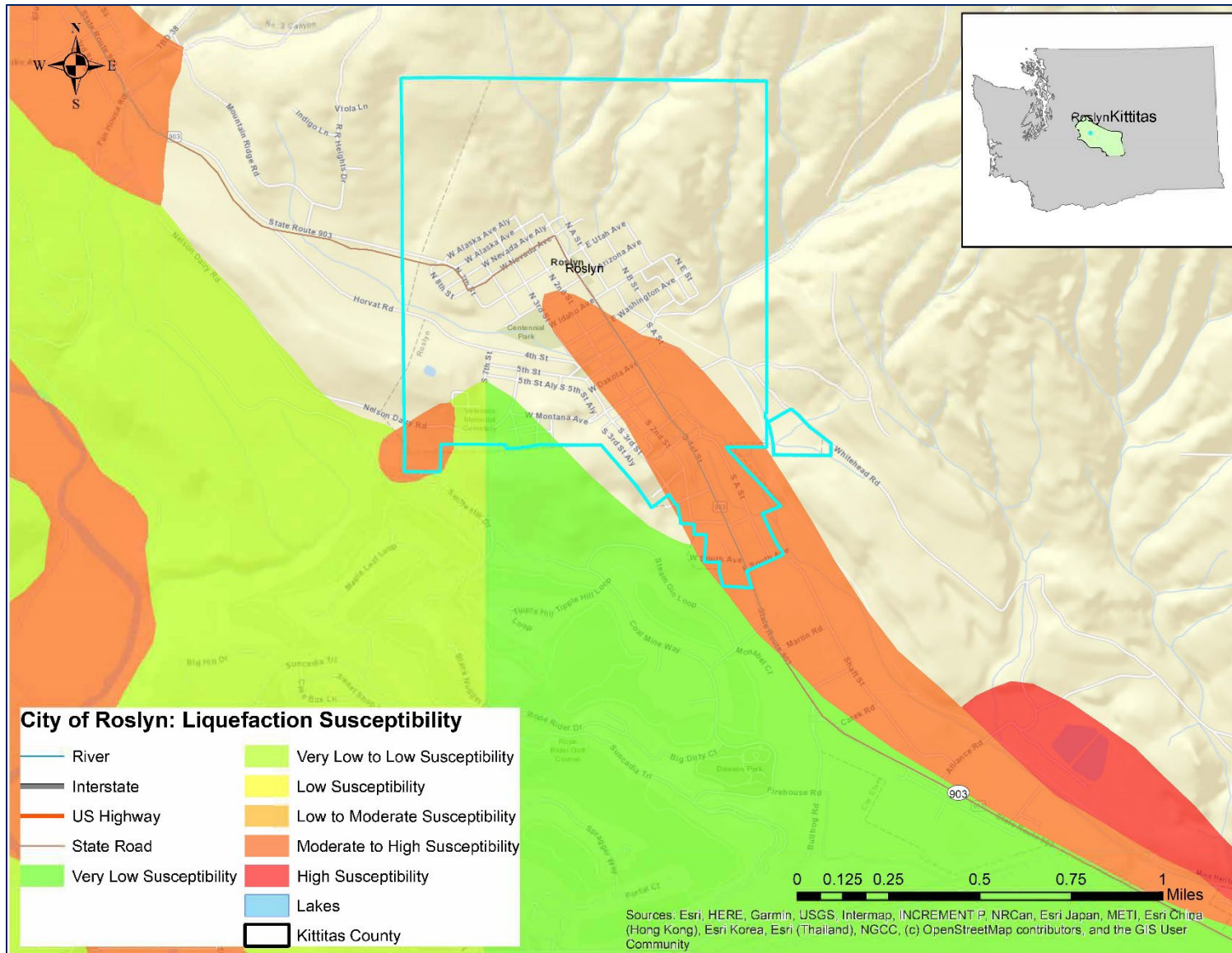




Figure 4. Special Flood Hazard Area

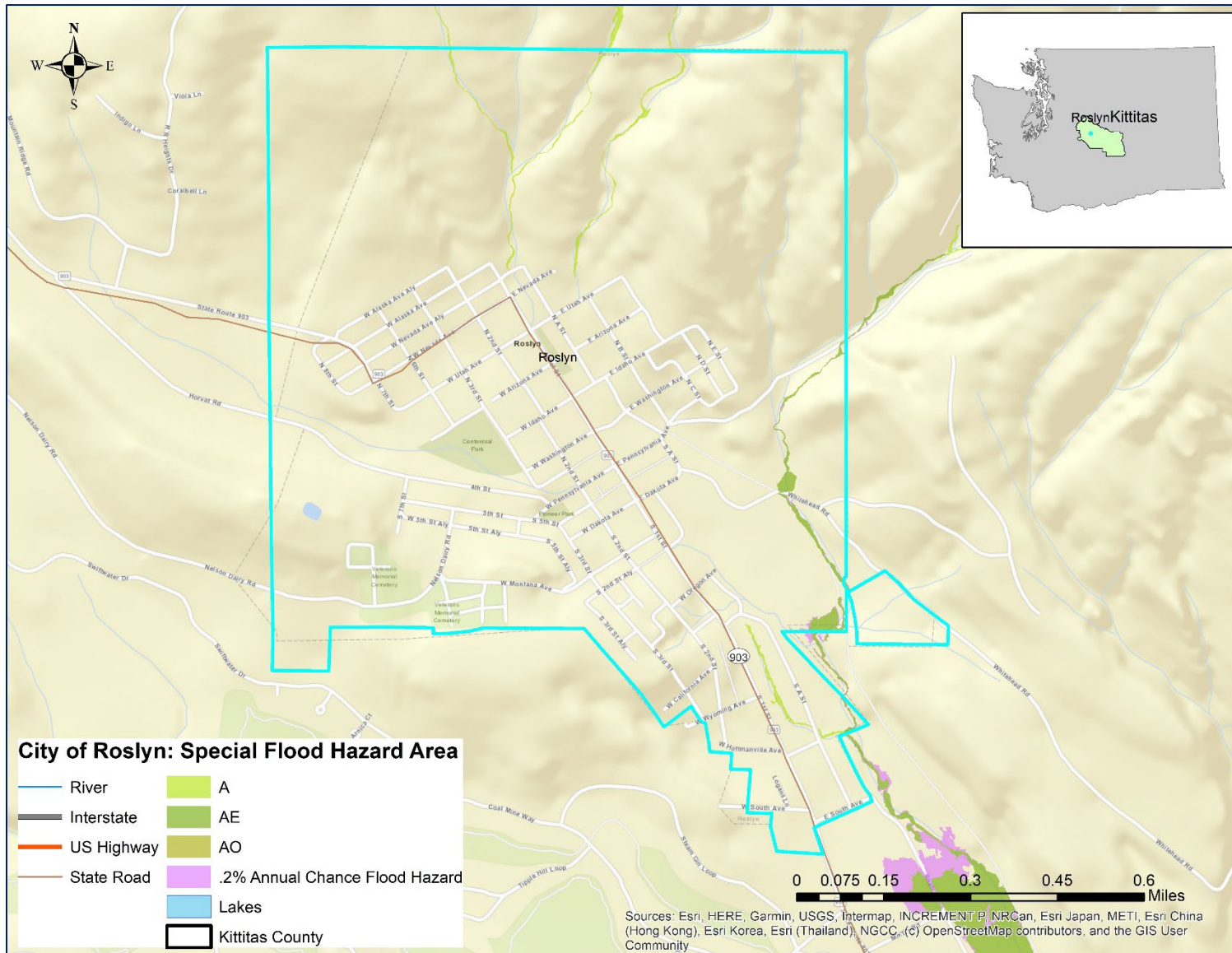




Figure 5. Wildland Fire Hazard Area

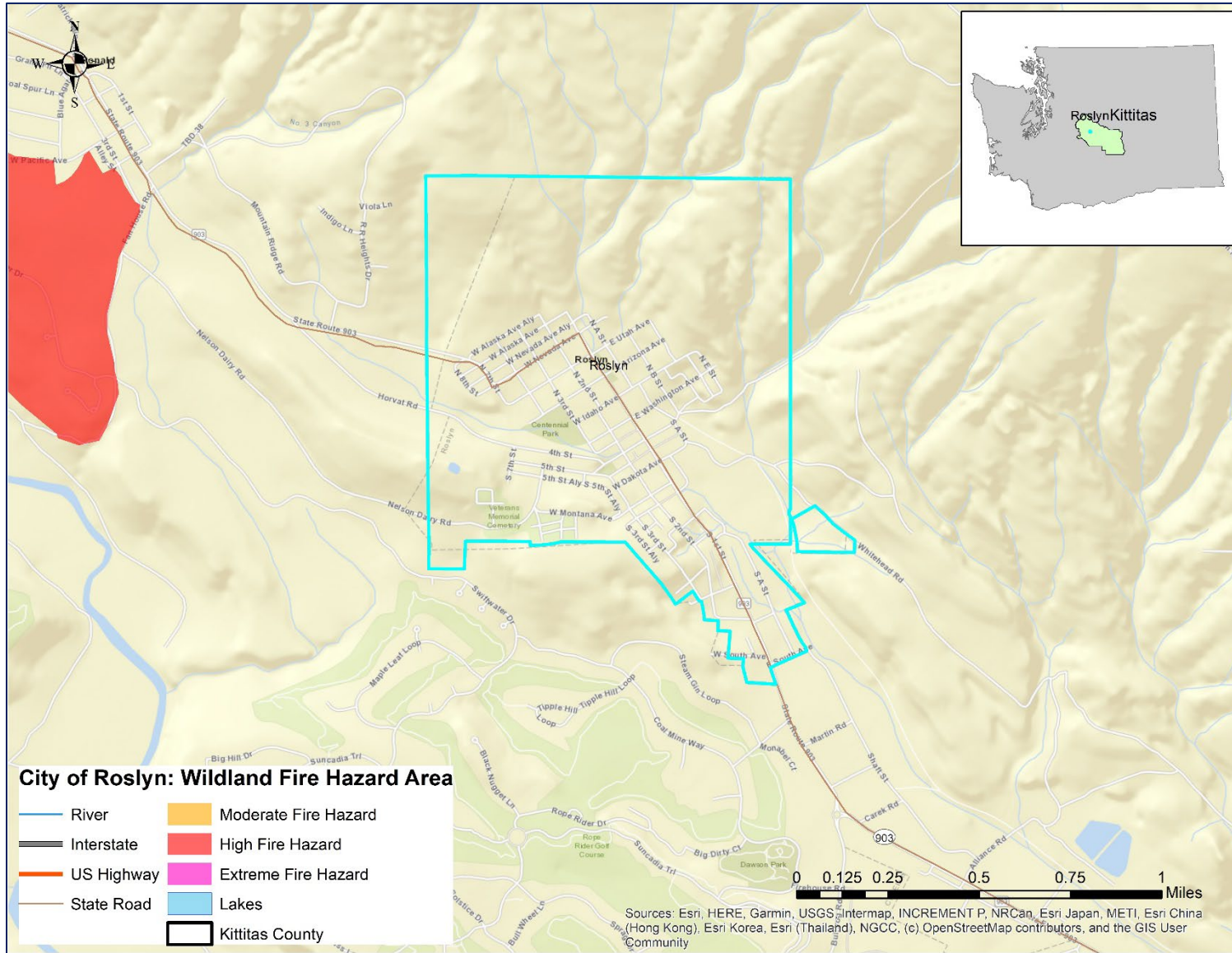
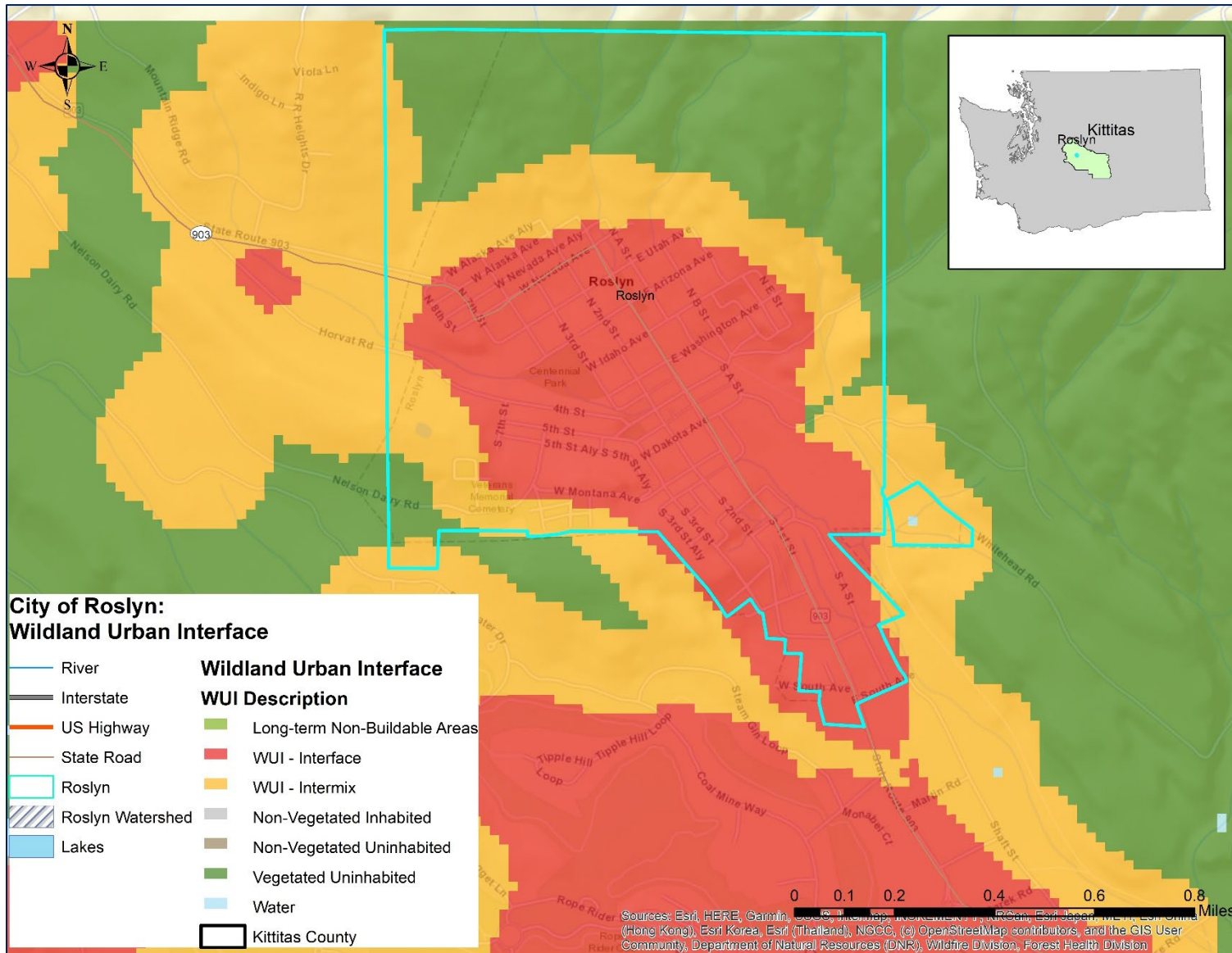


Figure 6. Wildland Urban Interface Map





## APPENDIX B. PLAN ADOPTION

*[Placeholder for adoption documentation after State and FEMA Approval]*